

Interreg

Euro-MED



Co-funded by
the European Union

Info Day
Open Call for proposals
Euro-MED02
Thematic projects

Italy, 19th September 2022

Interreg

Euro-MED



Co-funded by
the European Union

Strategic framework of the Programme

- Mission approach
- Priorities and specific objectives
- Types of projects
- Results Amplification Strategy

The Interreg Euro-MED Programme

294M€



Interreg
Euro-MED



Co-funded by
the European Union

Missions, priorities and specific objectives



Strengthening an innovative sustainable economy

1.1

Consolidating a competitive innovation ecosystem

2.6

Supporting circular economy



Protecting, restoring and valorising the natural environment and heritage

2.4

Promoting climate change adaptation and risks prevention

2.7

Enhancing Nature & biodiversity



Promoting green living areas

2.4

Promoting climate change adaptation and risks prevention



Enhancing sustainable tourism

1.1

Consolidating a competitive innovation ecosystem

2.6

Supporting circular economy

2.4

Promoting climate change adaptation and risks prevention

2.7

Enhancing Nature & biodiversity

Better Mediterranean Governance

6.6

A better cooperation governance

Interreg

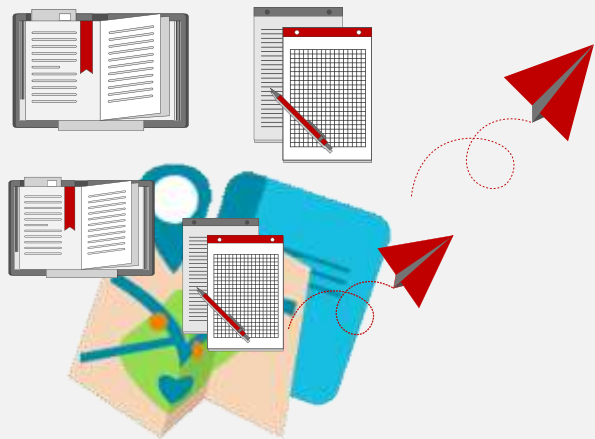


Co-funded by the European Union

Euro-MED

Two types of projects

THEMATIC PROJECTS

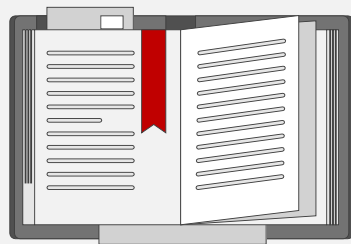


GOVERNANCE PROJECTS

NOT THIS TIME



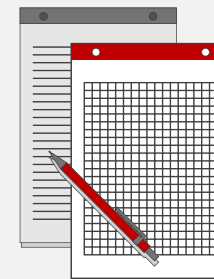
Study



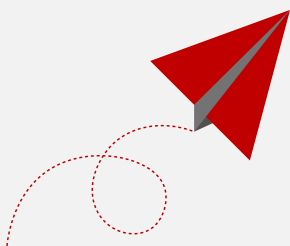
THEMATIC PROJECTS



Test



Transfer



Strategic territorial



Interreg



Co-funded by
the European Union

Euro-MED

Thematic projects contribute to the missions



Thematic Community



GOVERNANCE PROJECTS



Institutional Dialogue



Interreg



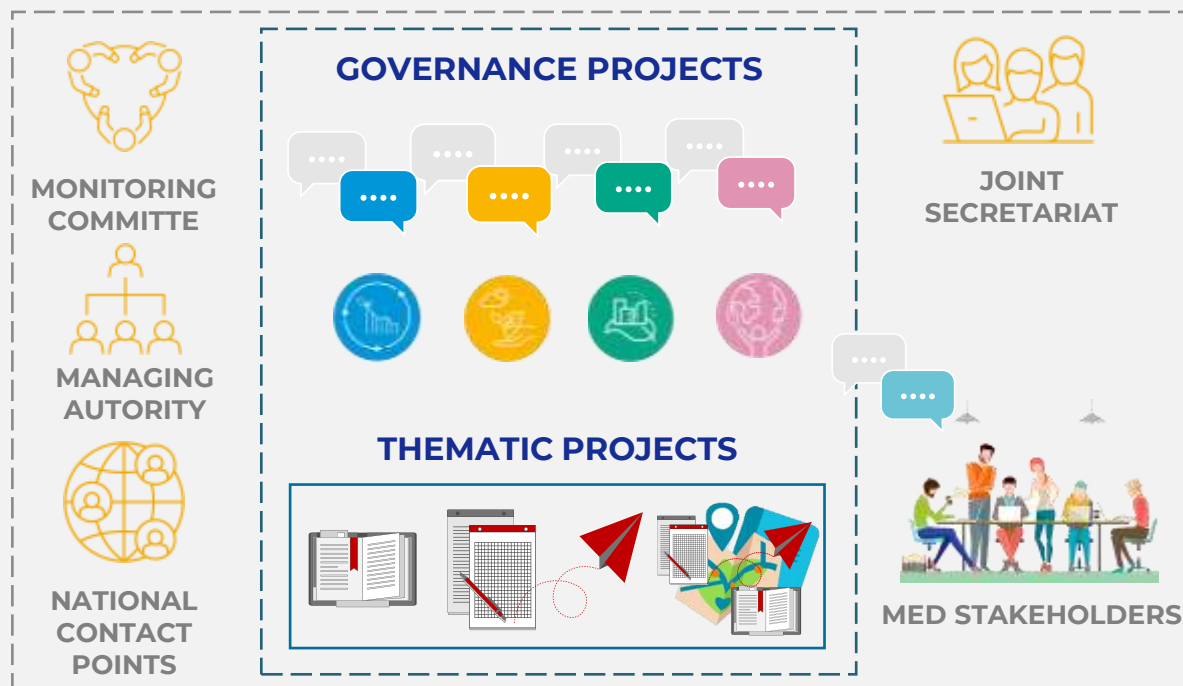
Co-funded by
the European Union

Euro-MED

2021-2027

COLLECTIVE STATE OF MIND

STRUCTURED COORDINATION MECHANISMS



CAPITALISATION PLAN

CAPITALISATION PLAN AND GOVERNANCE APPROACH

AMPLIFICATION STRATEGY EMBEDDING
CAPITALISATION AND GOVERNANCE APPROACH



Interreg

Euro-MED



Co-funded by
the European Union

Presentation of the Call and expectations

Partnership
Key project features

Expected partnership

- **As a minimum, the project partnership must be composed of organisations based in five (5) different countries within the Interreg Euro-MED cooperation area** (eligibility criteria B.1)
- **The LP is a public body, or a body governed by public law** (as defined in Directive 2014/24/EU) (eligibility criteria B.2)
- At least **2 partners are based in an EU region** of the Programme cooperation area
- Private institutions from **IPA** countries must be **non-profit**



Common Interreg fund

Reference documents:
Terms of Reference (Annex I)
Programme Manual

Interreg



Co-funded by
the European Union

Euro-MED

Co-funded partners

- Bodies from **EU countries** and countries participating to the Programme under the Instrument of Pre-Accession (**IPA**)
- Budget **co-financed by 80%**
- **Limited number** per project category: recommended maximum 8 for Study, 10 for Test, 8 for Transfer
- Implement activities and report, according to profile:
 - Study : institutional / scientific
 - Test : institutional / operational
 - Transfer : institutional / networks

	LOCATED IN EU MEMBER STATE	LOCATED IN A EURO-MED IPA STATE
National, regional and local public bodies	✓	✓
Public equivalent bodies (bodies governed by public law as defined in Article 2(1) of Directive 2014/24/EU)	✓	✓
Private institutions	✓	✓ <i>Only non-profit private institutions</i>
International organisations	✓	✓

Associated partners

- Bodies **from any country**, within or outside of the EU
- **Don't receive funds** but paired co-funded partner can cover travel and accommodation costs
- Potentially, unlimited number
- Take part in activities according to added-value :
 - Advisory
 - End-users
 - Observer

Eligible types of partners

- Local public authority - Regional public authority - National public authority
- Sectoral agency
- Infrastructure and (public) service provider
- Interest groups including NGOs
- Higher education and research organisations
- Education/training centre and school
- Enterprise, including SME
- Business support organization
- European Grouping of Territorial Cooperation (EGTC)
- International organisation, European Economic Interest Grouping (EEIG) (under national or international law)
- Hospitals and medical centers
- Other

**Listed in the Programme Manual
Possible restrictions in ToR
published for each call**

Interreg



Co-funded by
the European Union

Euro-MED

Compulsory activities: Monitoring the project carbon footprint

- **Step 1:** reduce project carbon footprint by design!
- **Step 2:** calculate the project carbon footprint
- **Step 3:** when feasible, compensate

HOW?

- ✓ Same methodology of calculation
- ✓ A tool used for the monitoring and calculation of carbon emissions
- ✓ A range of viable compensation actions



Reference documents:
Programme Manual

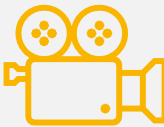
Compulsory activities: what is foreseen at least with TCP



2 F2F meeting



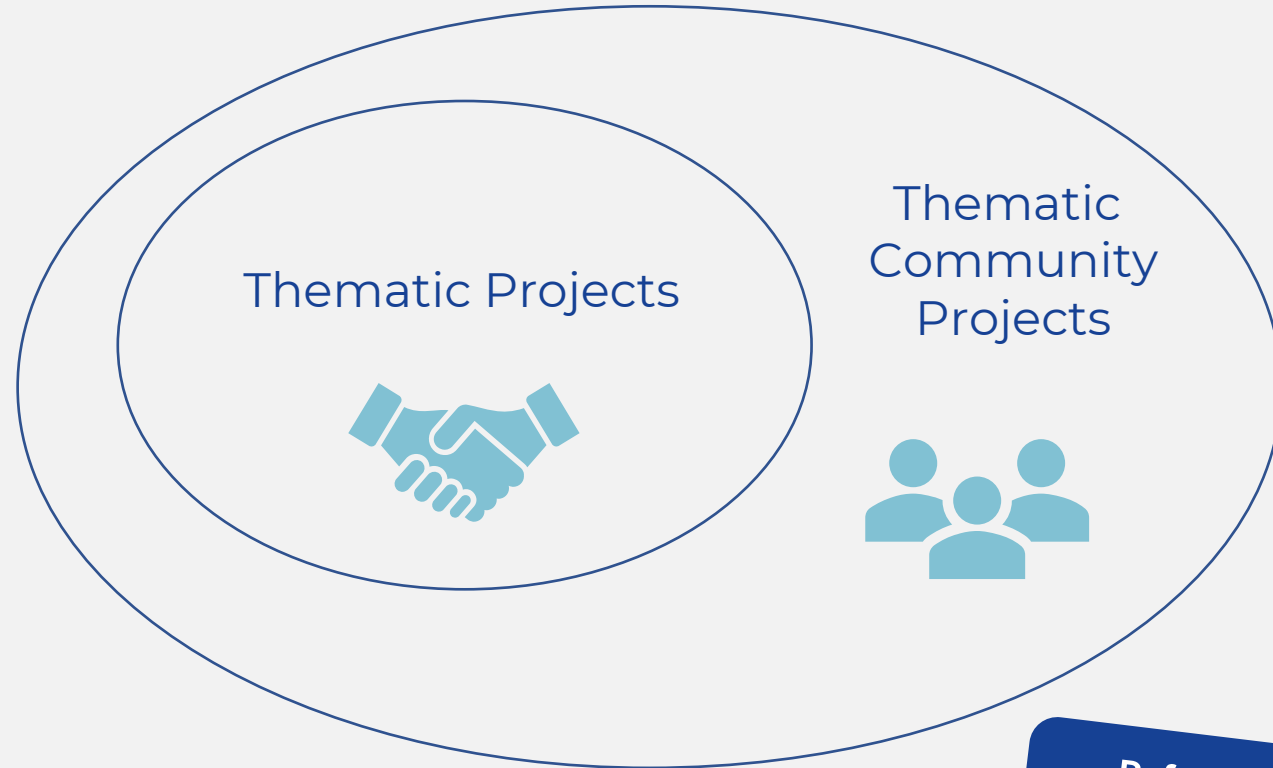
1 joint event



1 video of project



Training material



Reference documents:
Programme Manual
Terms of Reference

Target areas

All types of areas are targeted :

- Coastal and maritime areas
- Islands
- Rural and mountain areas
- Urban areas

However, a focus could be made on specific areas to provide adapted outputs



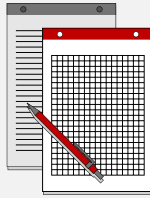
Thematic projects implementation

Total projects duration (implementation + closure activities) and budget



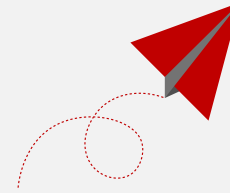
27 months

Max: 600.000€



33 months

Max: 3.000.000€



27 months

Max: 1.000.000€



Total budget = EU (80%) + national (20%) co-financing

Starting date of the activities: **1st May 2023**

Reference documents:
Programme Manual
Terms of Reference
Courtesy A.Form

Interreg



Co-funded by
the European Union

Euro-MED

Interreg

Euro-MED



Co-funded by
the European Union

Novelties in the budget

Preparation Costs
Travel and Accommodation

Lump sum for preparation costs

The amount covers all the costs incurred for the preparation and submission of the project proposal until the starting date of expenses eligibility period

- Total amount 37.000 €
- This lump sum is compulsory for all projects and is paid once the Subsidy Contract will be signed



Organisations from IPA countries can now receive preparation costs!
No more advance of payment mechanism

Interreg



Co-funded by
the European Union

Euro-MED

Travel and Accommodation

Simplified Cost Options (recommended)

15% of eligible staff costs (EU partners)

22% of eligible staff costs (IPA partners)

OR

Real costs

only in case the flat rate is not an appropriate method for the partner for justified reasons

- Each partner **choose** the method to be adopted for the calculation of travel and accommodation
- it will apply for the implementation of all the Interreg Euro-MED projects in which the partner participate
- It will not be possible to modify it after the partner's first project has started

Interreg

Euro-MED



Co-funded by
the European Union

Application procedure



Key documents composing a proposal

- ✓ **Application form template to be filled-in on Jems (English or French)**
- ✓ **Mandatory annexes**
 - partners (incl. LP) and associated partners declaration **generated from the Jems system and signed**
 - Signed page of the submitted AF



Two consecutive stages:

1. **Application Form**, to be **validated on "Jems" before 27/10/2022**, at 13.00 (Brussels time). (eligibility criterion A.1)
2. **Mandatory annexes**;, to be uploaded **on Jems before 10/11/2022** at 13.00 (Brussels time).

Reference documents:
Programme Manual
Terms of Reference (Annex I)
Jems Guidelines

Application and selection procedure

Projects appraisal

- I. The administrative and eligibility check
- II. Quality assessment criteria (in 2 phases)
- III. Pre-contractual criteria

Quality Assessment in 2 phases

Assessment grids detailed in the ToR (+ reference to the concerned section of the AF)

- 1st assessment phase:

Assessment of project relevance, cooperation character, intervention logic, partnership relevance

Rating based on 30 points (**18** out of 30 to be recommended for approval)

- 2nd assessment phase:

Assessment of horizontal principles, work plan, budget

Rating based on 50 points (**35** out of 50 to be recommended for approval)

Self assessment of your proposal recommended!

Reference documents:
Programme Manual
Terms of Reference (Annexes I; II
and III)

Interreg



Co-funded by
the European Union

Euro-MED

Calendar of the call - upcoming key dates



Info session 23 June 2022 <https://www.youtube.com/watch?v=-JhuCgqmM9s&t=22s>

Opening of the call: 27 June 2022

On-line Technical meetings to support drafting of applications

- **07/07:** Partnership and logical framework, Indicators
https://www.youtube.com/watch?v=arbKNVs_sR8&t=2507s
- **08/09:** Work plan, mandatory activities
- **22/09:** Budget, eligibility of expenditure, annexes
- **06/10:** Q&A session

Submission of your proposal:

- **27/10/2022** at 13h (Brussels time): Application Form validated on "Jems"
- **10/11/2022** at 13h (Brussels time): Mandatory annexes uploaded on Jems

Assessment and selection by the Programme Committee:

- November 2022 to March 2023 (depending on the number of applications received)

For more detailed information



- Programme webpage dedicated to the call:
 - **The Terms of Reference and its technical data sheet** including the eligibility and assessment criteria
 - **The Word application form template** (courtesy version, provided for information with specific indications to facilitate the writing of the proposal)
- The Programme Manual
- The Jems guide for entering the proposal on the Programme IT tool
- The Euro-MED 21-27 Cooperation Programme and its annexes
- The Euro-MED 21-27 Communication Strategy
- The Euro-MED 21-27 Results Amplification Strategy
- The online FAQ

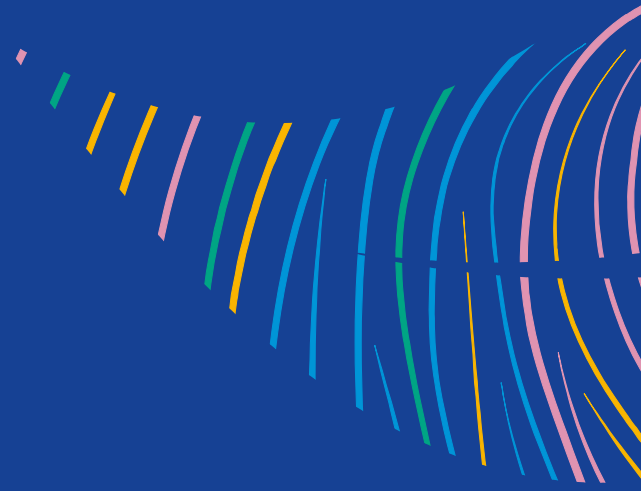
Interreg

Euro-MED



Co-funded by
the European Union


Tools supporting applicants



Website



<https://interreg-euro-med.eu/>



The screenshot shows the homepage of the Interreg Euro-MED website. At the top left, the logo consists of the word "Interreg" in blue, the European Union flag, and the text "Co-funded by the European Union". Below this is "Euro-MED". To the right is a search bar and a language selector set to "EN". A navigation menu includes "WHO WE ARE", "WHAT WE DO", "WHERE WE WORK", "GET INVOLVED" (highlighted in orange), "DOCUMENTS & TOOLS", and "NEWS & EVENTS". The main heading reads "Making the Mediterranean Green transition happen" in large blue font. A colorful abstract graphic of a leaf is on the left. Below the heading, the text "WHAT IS Interreg Euro-MED" is displayed. A URL "interreg-euro-med.eu/en/get-involved/" is visible at the bottom left of the page content.

Interreg
Euro-MED



Co-funded by
the European Union

Website – get involved

The screenshot shows the website header with the Interreg Euro-MED logo and the European Union flag. The navigation menu includes 'GET INVOLVED', which is circled in blue. A callout box on the left contains the text 'GET INVOLVED'. Below the navigation, the 'PROVISIONAL CALENDAR' section lists two calls for 2022. To the right, a timeline shows the '1st Call: Governance projects' starting in February and the '2nd Call: Thematic projects' starting in June. The 'OPEN CALLS' section states there is no open call at the moment.

GET INVOLVED

Interreg Euro-MED Co-funded by the European Union

Search... EN | FR

WHO WE ARE WHAT WE DO WHERE WE WORK **GET INVOLVED** DOCUMENTS & TOOLS NEWS & EVENTS

CALLS FOR PROPOSALS HOW TO APPLY FIND PROJECT PARTNERS

PROVISIONAL CALENDAR

1st call: Governance projects: 24th February – 1st June 2022.
2nd call: Thematic projects: end of June 2022 (to be confirmed).

The details of each call, past and open can be found here below.

Two calls are coming in 2022

Timeline: February, March, April, May, June, July, August, September, October, November, December

1st Call: Governance projects (February to June)
2nd Call: Thematic projects (June to end of June)

OPEN CALLS

There is no open call at the moment.





FAQ Frequently Asked Questions

Here you can find the answer to the most frequently asked questions about the Programme, tools, project application and implementation. If you do not find the answer to your question, please use the form below to send us your question. We might publish the answer here to enrich our FAQ.

Search input field with a magnifying glass icon.



General

1

When will the Programme manual be available on your website?



Partnership

27

- Where to find the partners' declarations?
- What does the IPA area of the Programme include?
- Is it possible to be full partner in IDP and associated in the TCP?

As stated in the ToR for Governance projects (page 23), there must be a minimum of six partners based in different countries that belong to the Interreg-Euro-Med eligible area, and that at least 1 of them must be based in the EU area (NUTS2 regions) of the Interreg Euro-Med space and 1 in the IPA area. In both the webinar and the Info session of Spain, a reply to a similar question was given that the...



Jems

6

- The PDF version of the application form, exported from Jems, does not include a page for signature. How can I sign it?
- I have an error when opening the partner declaration or the partner budget, downloaded from Jems. What should I do?
- The number of characters of the section "C3. Project overall objective" is 500 characters while it is 5000 characters in other sections. Is it correct?
- How can I change my password in Jems?
- Would it be better to register as an organisation in Jems, instead of different people from the same organisation being registered?



Project content

9

As the MED ACADEMY is an "obligatory"



Missions and objectives

7

- How can I identify the 10 SDGs indicators related to the mission, I want to address with my project?
- Should a project aim to one or more missions in general and target precisely one or more specific objectives?
- Are modular projects also related to missions? Some examples?
- How many Thematic Community projects will be supported? Are they related to missions?
- What is the difference between missions and specific objectives?



Project budget

9


Concerning the first call for proposals and regarding the budget for external expertise and services, should we detail the budget impact of external for the 4 first semesters






FAQ – Frequently Asked Questions







FAQ - Documents & tools

 **Project typology** 10

-  Are governance projects linked to the Programme's missions and how many will be approved?
-  How many governance projects will be approved?
-  Are there restrictions for the participation of governance projects' partners in thematic projects?
-  What type of partners are expected in an institutional dialogue project? Are you expecting only institutional partners?
-  Who is eligible for governance projects? What is the typology of partners for governance projects? Are governance projects only open to institutional actors?

-  "Coordinating with TCP or IDP and 20" is only one Work Package (WP)?
-  Can we add an extra explanation in the specific objective of each Work Package besides what is already specified in the Result Amplification Strategy?
-  Could you please provide a comprehensive list of mandatory activities for Thematic-Community and Institutional Dialogue projects?

-  particular for the Call for proposal on Governance Projects?
-  Can each partner choose its own cost option regarding travel and accommodation costs?
-  Are preparation costs still in order for projects proposals?
-  Are travel costs accounted as a flat rate now?

You need to be connected to this website to submit a ticket. If you are not yet, please follow this link to [login](#) or to [create your account](#).

[All the Tickets](#) If you have not found the answer to your question in the FAQ above, you may use this form to send us your question.

Subject

Subject in brief

Details

Paragraph B I _ _ “ ” ¶ ↵ ↶ ↷ ✖ ☰

FAQ

YOUR Account

Log in

Username or E-mail

Password

I'm not a robot



Keep me signed in

Login

or create a new account

Username

First Name

Last Name

E-mail Address

Password

Interreg



Co-funded by
the European Union

Euro-MED



Find project partners (Forum)



Do you have a project idea and are looking for partners to implement it? We have the solution for you: **sign up to our forum(s)!**

There is one **forum** per mission. You can access them without prior registration. If you want to add your own project idea or reply to a post, you will need to log in to your account or create one.

Follow the links below to access the different forums:



Innovative sustainable economy



Natural heritage



Green living areas



Sustainable tourism



Mediterranean Governance



Partner's forum

Interreg

Euro-MED



Co-funded by
the European Union

Making
the **Mediterranean**
Green Transition
happen

