

Policy Regional Consultation

Working Plan

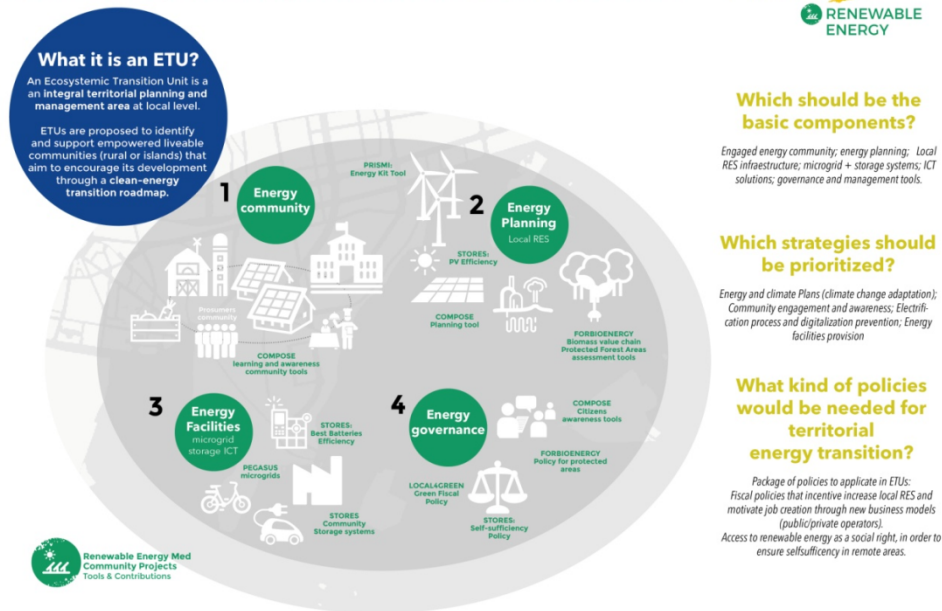
Conceptual Framework

Renewable Energy Community represented by Greencap Project developed a common approach based on the several contributions of the Modular Projects within the RE Community to energy transition, climate change adaptation & mitigation, land use planning and circular economy. The resulting merging approach is synthesized in a policy recommendation target to give an alternative roadmap to National regulatory framework to the application of the clean-energy package at Regional and Local level.

The main scope of the proposal bases in the creation of **Ecosystemic Transition Units** as a new denomination of a figure for energy transition implementation at local level, which its aim is to boost territorial development in Mediterranean Region making a special focus in rural and islands areas. The consultations will be held on six countries: **Bosnia-Herzegovina, France, Greece, Italy, Slovenia and Spain.**

Policy Session Ecosystemic Transition Units (ETU)

an alternative roadmap for a clean-energy transition in rural and island areas in the Mediterranean

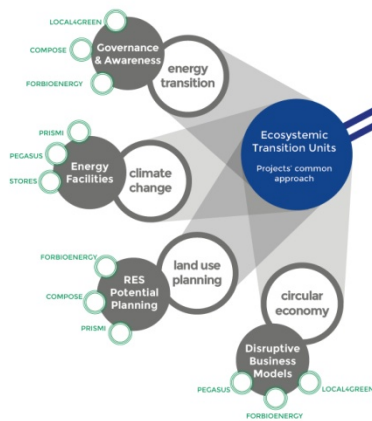


Policy Paper Process Ecosystemic Transition Units

A Interreg Med Renewable Energy Community common approach

RES Community Modular Projects have merged their technical contributions to 4 main policy pillars: Energy Transition; Climate Change; Land Use Planning and Circular Economy. Their contributions are grouped on energy strategies at local authorities.

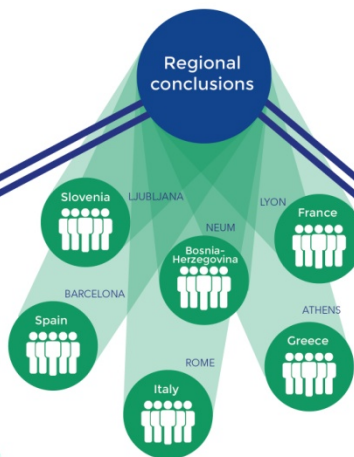
Ecosystemic Transition Units are proposed as a **new planning and management tool** in order to boost an integral deployment of clean-energy transition in rural and island areas.



B Regional Consultation Debates in 6 Med Regions

How we can boost ecosystemic transition units in rural and islands areas?

Regional Consultations will debate and vote through working groups which are the most relevant strategies. Voting systems will be supported by APP and will be register for the plenary session in EUSEW



C EUSEW 2019 RES Med Community Policy Session

An introductory video synthesizes the contributions from RES Community Projects to Scientific added value, Governance and awareness tools. Then it will be explained the previous process of working sessions. The debate will focus on:

Which should be the basic components to define an Ecosystemic Transition Units?
Which strategies should be prioritized for its implementation at local or regional level?

Audience will vote as well the policy recommendations debated through slido APP.

