

# Interreg Mediterranean



# MADE IN MED





# CONTENT

P.4		<b>INTRODUCTION</b>
P.9		<b>BLUE GROWTH</b>
P.13		<b>GREEN GROWTH</b>
P.19		<b>SOCIAL &amp; CREATIVE</b>
P.25		<b>EFFICIENT BUILDINGS</b>
P.31		<b>RENEWABLE ENERGY</b>
P.35		<b>URBAN TRANSPORTS</b>
P.41		<b>SUSTAINABLE TOURISM</b>
P.49		<b>BIODIVERSITY PROTECTION</b>
P.55		<b>MEDITERRANEAN GOVERNANCE</b>

This catalogue will be available for download on the Programme website in both the Programme's languages after the event.



This flyer underlines the work done so far by our projects.  
Most of them are not yet closed and therefore the outcomes are still unclear.

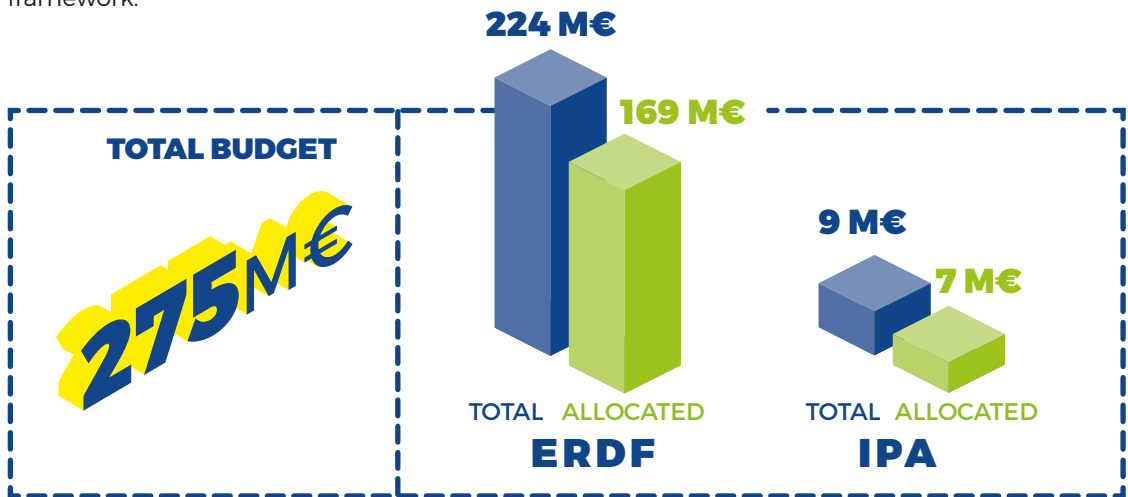
## OVERVIEW ON THE PROGRAMME

The Interreg MED Programme is a European transnational cooperation programme adopted by the European Commission and co-financed by the European Regional Development Fund (ERDF). It provides funds for cooperation projects developed and managed by public bodies – and in some cases by private entities – in the Northern regions of the Mediterranean.

Its overall objective is to promote sustainable growth in the area by fostering innovative concepts and practices and a reasonable use of resources and by supporting social integration through an integrated and territorially based cooperation approach.

From Portugal to Cyprus, stakeholders of 13 different countries work together to find shared solutions to common challenges such as the implementation of low carbon economy, the protection of natural and cultural resources and the strengthening of innovation. These three challenges have been identified as the most critical for the area.

In order to be as efficient as possible, our projects will also be working on triggering changes in policies and political strategies on these three different topics. In this regard, the Programme aims to build a new community of interests through the implementation of tools and policy framework.





## PROJECTS BY AXES AND THEMATICS

The Interreg MED Programme has chosen four priority axes (three thematic axes and a strategic one)

### AXIS 1



**BLUE GROWTH**  
> 7 PROJECTS



**GREEN GROWTH**  
> 15 PROJECTS



**SOCIAL & CREATIVE**  
> 12 PROJECTS

### AXIS 3



**SUSTAINABLE TOURISM**  
> 18 PROJECTS



**BIODIVERSITY PROTECTION**  
> 12 PROJECTS

### AXIS 2



**EFFICIENT BUILDINGS**  
> 11 PROJECTS



**RENEWABLE ENERGY**  
> 11 PROJECTS



**URBAN TRANSPORTS**  
> 8 PROJECTS

### AXIS 4



**GOVERNANCE**  
> 1 PROJECT

**10**  
STUDIO

**13**  
STUDIO +  
TEST

**35**  
TEST

**11**  
TEST +  
CAPITALIZZA-  
ZIONE

**5**  
CAPITALIZZA-  
ZIONE

**8**  
INTEGRATI

**8**  
ORIZZONTALI

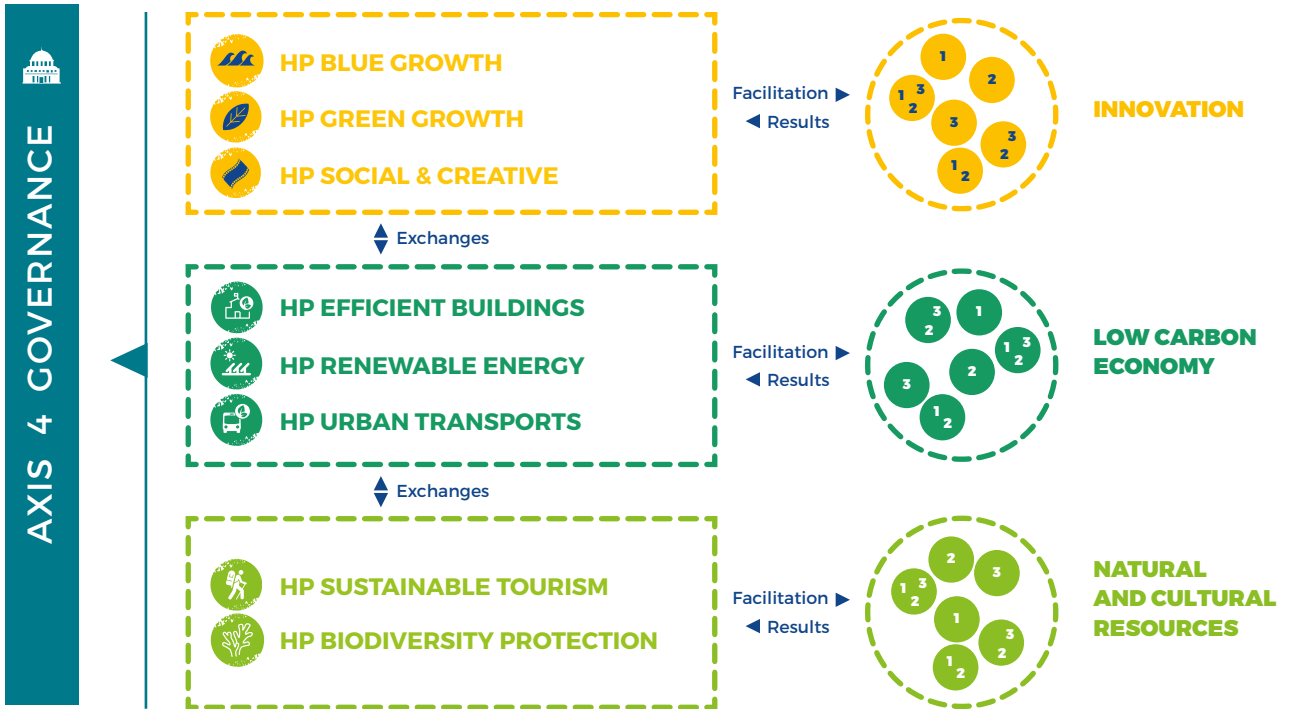
**1**  
PIATTAFORMA

# HOW DOES ALL THIS WORK TOGETHER?

**3RD  
LEVEL IMPACT**  
MEDITERRANEAN  
SHARED VISION  
ON POLICIES & ACTIONS

**2ND  
LEVEL IMPACT**  
**HORIZONTAL PROJECTS**  
THEMATIC TRANSNATIONAL COMMUNITIES

**1ST  
LEVEL IMPACT**  
**MODULAR PROJECTS**  
LOCAL RESULT



**ACTING FOR A BLUER MED**







# BLUE GROWTH

The Interreg MED Programme supports projects that contribute to foster blue growth in the Mediterranean and seek to reinforce the joint work between the various stakeholders in the sector: research bodies, training structures, public authorities and civil society. The Blue Growth projects, coordinated by the InnoBlueGrowth partnership, aim to create innovative solutions to unlock the potential of a healthy and productive sea. This goal is articulated around sub-themes such as maritime surveillance, blue energy and supporting the competitiveness of the maritime sector.

## TOPICS OF INNOVATION

- Blue energy
- Fishing and Aquaculture
- Integrated Maritime Surveillance
- Biotechnologies
- Coastal and Maritime Tourism

## KEY TARGET GROUPS

- SMEs
- Economic Operators
- Public Authorities
- Research Structures



STUDY  
PROJECTS



TESTING  
PROJECTS



INTEGRATED  
TERRITORIAL  
PROJECT



## iBlue

iBlue aims to revive the yachting sector through a transnational network, a sustainable methodology and a critical mass of knowledge. The first version of the methodology was developed after an in-depth literature review focused on business models and sustainability indicators. Data on national yacht industries were gathered, while a company best practices collection is still ongoing.

TOTAL PROJECT BUDGET : € 2 252 855,00  
 ERDF PROJECT BUDGET : € 1 774 676,75  
 IPA PROJECT BUDGET : € 140 250,00

### PARTNERS

- LP : University of Udine (IT)
- Science and Technology Park of the University of Rijeka Ltd (HR)
- Groupe Kedge Business School (FR)
- Official Chamber of Commerce, Industry and Shipping of Seville (ES)
- Cyprus Chamber of Commerce and Industry (CY)
- Lasithi Chamber of Commerce (GR)
- University of Primorska (SI)
- RDCI Development and Innovation Network (PT)
- University of Rijeka (HR)
- Tourist and Economic Promotion Development (ES)
- Durres Chamber of Commerce and Industry (AL)



## MAESTRALE

MAESTRALE project consists in studying and testing activities for blue energy deployment in the Interreg MED area. A geo-database has been released (<http://maestrale-webgis.unisi.it>) embedding information on energy potentials. The aim of the project is to select 20 pilot sites as concrete initiatives to implement blue energy plants in partner regions. Different stakeholders will be involved in Blue Energy Labs to achieve a participative design process.

TOTAL PROJECT BUDGET : € 2 407 425,00  
 ERDF PROJECT BUDGET : € 2 046 311,25

### PARTNERS

- LP : University of Siena (IT)
- Business Innovation Centre of Valencia (ES)
- IRENA – Istrian Regional Energy Agency L.t.d.
- Aristotle University of Thessaloniki (GR)
- Goriška local energy agency (SI)
- University of Cyprus (CY)
- INFORMEST (IT)
- University of Algarve (PT)
- MCAST-MIEMA Joint Research Centre for Renewable Energy Sources and Environmental Sustainability (MT)
- Maritime Cluster of Andalusia (ES)
- Malta Intelligent Energy Management Agency (MT)



## PELAGOS

PELAGOS aims to develop smart and sustainable blue growth by focusing on:

- enhancing a transnational Interreg MED cluster in the blue energy sector
- facilitating the distribution of targeted solutions and products specifically adapted for the Mediterranean regions.

An innovative on-line platform (be-cluster.eu) aims at increasing the innovation capacity of its members and support research & innovation in the marine renewable energy sector. It also fosters linkages and collaborations among all the stakeholders of the Quadruple Helix.

TOTAL PROJECT BUDGET : € 2 396 104,00  
 ERDF PROJECT BUDGET : € 2 036 688,40

### PARTNERS

- LP : Centre for Renewable Energy Sources and Saving (GR)
- Centre for Renewable Energy Sources and Saving (GR)
- Italian National Agency for New Technologies, Energy and Sustainable Economic Development (IT)
- University of Algarve (PT)
- CTN Marine Technology Centre (ES)
- Association of Chambers of Commerce of Veneto Region (IT)
- Hellenic Centre for Marine Research (GR)
- Maritime Institute of Eastern Mediterranean (CY)
- Toulon Var Technologies (FR)
- University of Zagreb, Faculty of Mechanical Engineering and Naval Architecture (HR)



## PROteus

The project aims at studying the various aspects and applications of Maritime Surveillance (MS) as well as creating a MS Cluster. It will offer a mix of transnational support activities to all stakeholders involved and develop a network involving the main actors of the quadruple helix operating in MS sectors.

As a result, the project will offer knowledge and technology transfer all around the Interreg MED area.

TOTAL PROJECT BUDGET : € 2 230 312,00  
ERDF PROJECT BUDGET : € 1 895 765,20

### PARTNERS

- LP : Chamber of Commerce, Industry, Crafts and Agriculture of Venice Rovigo Delta - lagunare (IT)
- University of the Aegean (GR)
- Maritime Institute of Eastern Mediterranean (CY)
- Official Chamber of Commerce, Industry and Shipping of Seville (ES)
- Toulon Var Technologies (FR)
- Piraeus Port Authority SA (GR)
- University of Algarve (PT)
- Liguria Ricerche Spa (IT)
- Valencia port Foundation for Research, Promotion and Commercial Studies of the Valencian region (ES)

## STARTING IN 2018

TESTING

### 4HELIX+

4helix+ project aims at stimulating, coaching and funding cross-sectoral and trans-boundary innovation in the blue growth sector. It will collaborate with innovation agents such as fablabs, co-working spaces, makerspaces, creative hubs... to bridge the gap among the Mediterranean maritime clusters and within their quadruple helixes.

INTEGRATED

### MISTRAL

MISTRAL intends to make marine knowledge and sustainable innovation the key drivers for blue growth. To this end, it will support MED clusters to become an excellent intermediary of knowledge and implement sustainable development trajectories, harmonised with the MED regions Smart Specialisation Strategies.



**UNLOCKING THE GREEN POTENTIAL**



# GREEN GROWTH

The objective of the projects co-financed under this thematic is to develop and/or implement greener development models built on an environmentally friendly use of resources. In order to achieve this goal, the Interreg MED Green Growth community, led by the SYNGGI project, aims at developing unified findings that will complement existing policies. Thus, more jobs could be created in the green economy, stimulating sustainable growth. With the addition of new projects in 2018, this thematic community becomes the biggest of the Interreg MED Programme. For the first time over 100 partners from 13 countries will exchange knowledge in the field of green growth.

## TOPICS OF INNOVATION

- Sustainable agriculture
- Eco-innovation
- Green manufacturing
- Green public procurement
- Green smart mobility
- Waste management/recycling
- Smart cities

## KEY TARGET GROUPS

- SMEs
- Economic Operators
- Public Authorities
- Research Structures



STUDY  
AND TESTING  
PROJECT



TESTING  
PROJECTS



TESTING AND  
CAPITALISING  
PROJECT



CAPITALISING  
PROJECTS



INTEGRATED  
TERRITORIAL  
PROJECT



## ARISTOIL

ARISTOIL project aims at boosting the Mediterranean olive oil sector competitiveness. It will achieve this through the development and application of innovative production and quality control methodologies leading to olive oil with enhanced health protecting properties (as recognized by EU 432/2012 regulation). ARISTOIL has already delivered the Olive Oil Living Lab, a Guide for production and quality control of olive oil with increased health protecting properties, an Automated measurement application, a Methodology on establishing a Certification Centre and its Operational e-Guide, and an Agronomic Factors Database.

TOTAL PROJECT BUDGET : € 2 008 200,00  
ERDF PROJECT BUDGET : € 1 706 970,00

### PARTNERS

- LP : ECTC Efxini Poli - SolidarCity Network (GR)
- EuroMediterranean Center for the sustainable development (IT)
- National and Kapodistrian University of Athens (GR)
- Larnaca /Famagusta District Development Agency (CY)
- ARISTOLEO (GR)
- University of Split (HR)
- University of Cordoba (ES)
- Libre Consortium de Municipalités de Raguse (IT)
- Region of Peloponnese (GR)
- Oleoecanthal Andalusian Society (ES)



## CAMARG

CAMARG aims at exploiting a sustainable purchasing and distribution framework based on the zero-km philosophy. Its key message is "High-quality zero-km agro-food products directly on your table at the same price of standard-quality mass retail ones". CAMARG's solution will help producers to overcome market obstacles but also consumers in getting fresh, authentic products.

TOTAL PROJECT BUDGET : € 2 001 146,24  
ERDF PROJECT BUDGET : € 1 700 974,96

### PARTNERS

- LP : Consorzio IB Innovation , Lead partner (IT)
- BISY srl (IT)
- Confagricoltura Emilia-Romagna (IT)
- Andalusia Smart City Cluster (ES)
- Cluster of agrofood innovation in Granada (ES)
- Regional Development Agency of Slavonia and Baranja (HR)
- Association for Creative Development Slap (HR)
- Agrofood Regional Innovation and technology transfer center (FR)
- Regional Chamber of Agriculture PACA (FR)



## GRASPINNO

GRASPINNO supports green procurement solutions in energy refurbishment of public buildings. Its goals are to enhance the capacity of public authorities to manage energy efficiency improvements and encourage SMEs to enter the green energy market. GRASPINNO has already delivered a Unified Platform, which provides access to green criteria to use in procurement, and a Transnational Mediterranean Network (TMN) – an online exchange forum for public and private stakeholders interested in renewable energy sources and energy efficient solutions.

TOTAL PROJECT BUDGET : € 3 204 787,00  
ERDF PROJECT BUDGET : € 2 465 213,70  
IPA PROJECT BUDGET : € 175 567,50

### PARTNERS

- LP : University of Patras (GR)
- Atlantis Consulting SA (GR)
- Terre di Siena Lab (IT)
- Mountain Community Alto Basento (IT)
- University of Maribor (SI)
- Inter-District Association of Electrification and Lightening of Haute-Corse (FR)
- Association of Chambers of Commerce of Veneto Region (IT)
- Veneto region (IT)
- Ministry of Transport, (CY)
- General Secretariat for Commerce and Consumer Protection (GR)
- Chamber of Commerce and Industry of Terrassa (ES)
- Government of Zenica-Doboj Canton (BA)



## GREENOMED

GREENOMED project aims at contributing to green manufacturing through the design and implementation of a European network of pilot plants in the Interreg MED regions. In the GREENOMED project, pilot plants are conceived as innovation infrastructures accessible to companies, including SMEs, where they can understand, test and set-up innovative technologies and methods for their businesses.

TOTAL PROJECT BUDGET : € 2 050 000,00  
ERDF PROJECT BUDGET : € 1 742 500,00

### PARTNERS

- LP : National Research Council of Italy - Institute of Industrial Technologies & Automation (IT)
- Lombardy Intelligent Factory Association (IT)
- Marche Manufacturing Cluster Association (IT)
- EURECAT (ES)
- Pomurje Technology Park (SI)
- Technology Park Ljubljana (SI)
- Croatia Chamber of Economy (HR)
- Cluster Intelignтна Energija (HR)
- Plastipolis (FR)
- i-BEC - Interbalkan Environment Centre (GR)



## MADRE

MADRE project deals with urban and peri-urban agriculture. Their goal is to foster sustainable metropolitan food supply model by capitalising on existing good practices collected and analysed in a Best Practice Catalogue. The project is also organising six local and transnational working groups to elaborate recommendations for public authorities and initiating a transnational network of cooperation with a collaborative platform to reference stakeholders, projects, resources and events on Mediterranean urban and peri-urban agriculture.

TOTAL PROJECT BUDGET : € 1 173 175,00  
ERDF PROJECT BUDGET : € 877 051,25  
IPA PROJECT BUDGET : € 120 147,50

### PARTNERS

- LP : LP Agency for Sustainable Mediterranean Cities and Territories - Lead partner (FR)
- ANIMA Investment Network (FR)
- Metropolitan City of Bologna (IT)
- MedCities (ES)
- Aristotle University of Thessaloniki (GR)
- Mediterranean Agronomic Institute of Montpellier (FR)
- Agricultural University of Tirana (AL)



## PEFMED

The main objectives of the PEFMED project are the reduction of environmental footprints and the implementation of green innovations along the whole agrofood supply chain. PEFMED foresees the development of the "PEFMED method" based on the application of the European "Product Environmental Footprint (PEF)", combined with a set of socio-economic indicators in a specific territorial context. The PEF method takes into account the impacts of a product throughout its life cycle, from cultivation of raw materials, through processing, transport and use, to disposal and recycling.

TOTAL PROJECT BUDGET : € 2 438 360,51  
ERDF PROJECT BUDGET : € 2 072 606,43

### PARTNERS

- LP : Italian National Agency for New Technologies, Energy and Sustainable Economic Development (IT)
- Italian Federation of Food Industry (IT)
- French Association of Food and Drink Industry (FR)
- Spanish Food and Drink Industry Federation (ES)
- Portugal Food and Drink Federation (PT)
- Federation of Hellenic Food Industries (GR)
- Chamber of Commerce and Industry of Slovenia - Chamber of Agricultural and Food Enterprise (SI)
- Agrofood Regional Innovation and Technology Transfer Center (FR)
- Italian Ministry for the Environment, Land and Sea (IT)



**STARTING IN 2018**

TESTING

**ESMARTCITY**

The project's primary objective is to improve the innovation capacity of cities by creating innovation ecosystems involving citizens, businesses, universities and public authorities. To reach this goal, it will test the Smart City concept, which uses digital and energy saving technologies to allow better services for citizens with less impact on the environment, producing new employability and living scenarios. ESMARTCITY will focus on providing specific services to citizens in the field of intelligent urban planning, energy efficiency of buildings and smarter public lighting.

TESTING

**CREAINNOVATION**

Creainnovation will design, launch and test e-Labs for Creative Innovation, engaging regional and transnational public entities, students, researchers and managers while designing and testing structured processes for new innovation supporting policies. In the e-Labs (CieL) SMEs and public organizations will generate sustainable innovation ideas with flexible and innovative tools fostering their creativity and innovation. Managing creativity successfully will help organisations to tap into hidden capacity for growth and improved competitiveness.

TESTING

**REINWASTE**

REINWASTE will aggregate, in the Interreg MED regions, three influencing food «Clusters»(IT,FR,ES) dealing with waste prevention in the field of agro-food, to enhance transnational network of competences, select and test the best available solutions and quickly transfer this knowledge. REINWASTE aims to bring a concrete contribution to the reduction of inorganic waste, favouring the adoption of greener innovative concepts by the agriculture & food industries, with a focus on SMEs.

TESTING

**RE-LIVE WASTE**

RE-LIVE WASTE will test innovative solutions for livestock waste management in selected Interreg MED regions, taking into account technical, environmental, economic and legal aspects. The project pilot actions will transform livestock waste into organic high-value commercial fertilizers, contributing to smart and sustainable growth and to the creation of new businesses and market opportunities.

TESTING

**EMBRACE**

Embrace aims at testing a model and toolkit for the establishment of two transnational meta-clusters working on circular economy's principles. The project will offer to Clusters, SMEs and Innovation stakeholders a set of instruments able to strongly introduce circular economy in two leading sectors of the Interreg MED area: Wine and Agro-food. They will assure the provision of awareness and training actions addressed to both economic actors (SMEs and clusters) and Public Administration (Regions, provinces) with the final goal of introducing feasible circular economy practices into those two sectors, and more.



## TESTING

### **GREEN MIND**

Green mind has the objective to strengthen the transnational activities of clusters and agencies to support SMEs systems in exploiting the market opportunities of the raising demand for green & smart mobility products and services. In this project, eight Interreg MED territories cooperate to: test new market intelligence, offer matchmaking services for SMEs, set up a transnational innovation network and deliver a policy support programme to mainstream the project results based on the Smart Specialisation Strategies of the involved regions.

---

## CAPITALISING

### **MED Greenhouses**

Starting from the LIFE+»Adapt2change” project, MED Greenhouses will implement innovative greenhouses in the Interreg MED area to minimise energy and water demands. Its overall objective is to improve eco-innovation capacities of public & private actors in the greenhouse/agriculture sector through stronger transnational cooperation, knowledge transfer & better collaborative networks.

---

## INTEGRATED

### **FinMED**

FinMED's aim is to boost the financing of innovation in the green growth sector through improved delivery of policies and strategies and the introduction of innovative cluster services. It will develop and adopt new concepts, principle and practices to fund green growth strategies, improve collaboration among involved stakeholders and bridge the gap between enterprises and funding actors.



**FOSTERING SOCIAL INNOVATION,  
CULTURAL AND CREATIVE  
INDUSTRIES**



# SOCIAL AND CREATIVE

The Social and Creative thematic community, led by TALIA Horizontal project, aims to promote trans-local innovation clusters for creative and social innovation.

By improving the innovation capacities of public and private stakeholders from cultural and creative industries, they want to deliver better social outcomes, creating new social relations or modes of cooperation. Their projects shall seek new responses to social needs but also to have a positive impact on the dynamic cultural and creative sector.

## TOPICS OF INNOVATION

- Open Data
- Public Sector Innovation
- Coworking
- Social innovation
- Creative design
- Collaborative economy/sharing economy
- Innovative Entrepreneurship

## KEY TARGET GROUPS

- SMEs
- Economic Operators
- Public Authorities
- Research Structures



STUDY  
PROJECTS



STUDY  
AND TESTING  
PROJECTS



TESTING  
PROJECTS



TESTING AND  
CAPITALISING  
PROJECT



INTEGRATED  
TERRITORIAL  
PROJECTS



## CHIMERA

CHIMERA aims at supporting private and public actors in the field of cultural creative industries in order to improve their capacity in the field of innovation, networking, clustering, and internationalisation. In this first year of activity, CHIMERA met its stakeholders several times and started designing a strategy to establish and develop innovative CCI clusters. Its first outputs are "regional strategic action plans".

TOTAL PROJECT BUDGET : € 2 470 882,00  
 ERDF PROJECT BUDGET : € 1 969 638,70  
 IPA PROJECT BUDGET : € 130 611,00

### PARTNERS

- LP : Autonomous Region Friuli Venezia Giulia (IT)
- Chambre de Commerce and Industry Nice-Côte d'Azur (FR)
- University Nice Sophia Antipolis (FR)
- Region of Sterea Ellada (GR)
- Regione Basilicata (IT)
- Puglia Creativa (IT)
- Universidade do Algarve (PT)
- Promálaga (ES)
- Cambra de Comerçe de Terrassa (ES)
- Parc Audiovisual de Catalunya (ES)
- Tehnološki park Ljubljana (SI)



## CO-CREATE

Co-Create project objective is to support cross-fertilization processes between creative industries and traditional clusters, contributing to test co-design and creative methods applied to entrepreneurs and cluster managers, with the support of IPR Instruments for their management. The project is actually in its testing phase: after concluding the activity of «Training the Trainers», it is now setting up a pilot action to support SMEs involved in "Creative Camps".

TOTAL PROJECT BUDGET : € 2 711 815,33  
 ERDF PROJECT BUDGET : € 2 305 043,03

### PARTNERS

- LP : Chamber of Commerce, Industry, Crafts and Agriculture of Venice Rovigo Delta Lagunare (IT)
- Veneto Region (IT) / - Secartys (ES)
- IAT (ES) / - Jozef Stefan Institute (SI)
- Madan Parque (PT)
- Chamber of Kilkis (GR)
- Politecnico di Milano (IT)
- Lombardy Region (IT)
- Teces (SI)
- ecos, Razvojni Center (SI)
- Orodjarstva Slovenije (SI)
- Incubation for Growth S.A. (GR)
- Region of Central Macedonia (GR)
- Development Agency Zagreb (HR)
- Knowledge Innovation Market Foundation (ES)
- Development Agency of South Aegean Region (GR)



## COWORKMED

COWORKMed aims at proposing a common definition of coworking and recommendations to public authorities to foster innovation at a European and regional level. It is conducting the first quantitative and qualitative studies on coworking spaces in five countries or regional territories of the Mediterranean. It organized three webinars and four workshops to deal with economic, social and territorial issues related to coworking.

TOTAL PROJECT BUDGET : € 599 572,50  
 ERDF PROJECT BUDGET : € 509 976,63

### PARTNERS

- LP : Agency for sustainable Mediterranean cities and territories (FR)
- IRIS Research Institute (IT)
- Development Agency Zagreb (HR)
- BIBA Venture Partners (ES)
- Barcelona Activa (ES)
- Institute of Entrepreneurship Development-IED (GR)
- PACA Region (FR)



## CREATIVEWEAR

CreativeWear aims to revitalise the textile & clothing industry by fostering creativity, personalised design, artisan and small-scale productions. It created five hubs - a social hub in Ljubljana, a crowd hub in Palermo, a Heritage hub in Prato, a technology hub in Valencia and an art one in Athens - to enhance the interactions between creatives (artists, designers, etc) and entrepreneurs looking for new business models.

TOTAL PROJECT BUDGET : € 2 221 050,00  
ERDF PROJECT BUDGET : € 1 887 892,50

### PARTNERS

- LP : Municipality of Prato **(IT)**
- University of Valencia **(ES)**
- Prato Textile Museum Foundation **(IT)**
- AITEX Textile Research Institute **(ES)**
- E-zavod **(SI)**
- ARCA Consortium **(IT)**
- Allium Zaposlitveni Center **(SI)**
- EURATEX European Apparel and Textile Confederation **(BE)**
- Hellenic Clothing Industry Association **(GR)**
- Creative Thinking Development **(GR)**



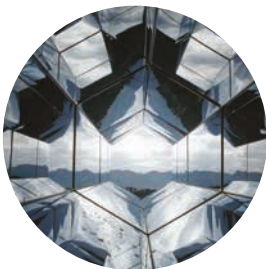
## OPEN DOORS

The project is exploring the potential of the Sharing and Collaborative Economy as a driver of growth for the Mediterranean regions. Being a Study project, it elaborated some papers, mainly on the state of the art and on the available opportunities. Moreover, the partnership would like to implement a network gathering the main actors of the project and the relevant stakeholders.

TOTAL PROJECT BUDGET : € 600 000,00  
ERDF PROJECT BUDGET : € 510 000,00

### PARTNERS

- LP : Lazio Region Association of Cities and Municipalities **(IT)**
- National Research Council – CNR IRPPS **(IT)**
- National Confederation of Crafts and SMEs **(IT)**
- University of Maribor **(SI)**
- University of Zagreb – Faculty of Electrical Engineering and computing **(HR)**
- University of Valencia - Research Unit on Cultural Economics **(ES)**
- Technology Park Ljubljana Ltd. **(SI)**



## PROMINENT MED

Prominent MED focuses on the use of Public Procurement of Innovation (PPI) to stimulate the adoption of innovative products and services that can improve the quality of the services for citizens. PPI will be related to innovative energy efficient materials and processes for public building energy refurbishment. The objective is to improve the quality of public services, to activate a market demand encouraging the industry to scale up its production chain in order to bring products on the market within a desired quality/price ratio and a specific time.

TOTAL PROJECT BUDGET : € 2 438 360,51  
ERDF PROJECT BUDGET : € 2 072 606,43

### PARTNERS

- LP : Regional Agency for the Economic Development of Umbria **(IT)**
- Ribera Consortium **(ES)**
- Baixo Alentejo Intermunicipal Community **(PT)**
- IrRADIARE, Science for evolution®, Lda. **(PT)**
- Polytechnic University of Valencia **(ES)**
- Regional Energy Agency North
- City of Koprivnica **(HR)**
- Sophia Antipolis Foundation **(FR)**
- Municipality of Narni **(IT)**
- Scientific and Technical Centre for Building **(FR)**



## STARTING IN 2018

### TESTING

#### CHEBEC

Chebec will create an integrated support programme for companies and professionals, developing international competences and contacts. The program will include training, consultancy, mobility actions, matching events and an innovation voucher scheme to concretely favour transregional collaborations. Competence building activities will also be organised for policy makers and support organisations, to improve the effectiveness of their actions.

### TESTING

#### ODEON

ODEON project aims at supporting the growth of Clusters and SMEs through the exploitation of Open and Big Data. The project will focus on supporting Public institutions to increase the quantity and quality of open data; set-up intermediary services (Digital Hubs) able to offer tailored support for the exploitation of open data by SMEs and Profit Sector in general with innovative services and products. An Interreg MED Open DATA Cluster will foster those digital hubs and create linkages in order to increase their innovation and internationalisation capacities.

### TESTING

#### SMATH

SMATH's main goal is to improve the quality and quantity of connections between the publicly oriented domain of culture and the business-oriented domain of creativity via innovative forms of clustering called "Smart Atmospheres". It intends to generate "Smart Atmospheres" able to support the start-up and the development of SMEs in the cultural and creative sectors, facilitating the access to "culture factories" in order for investors and public actors to be able to exploit their potential and support growth in the Interreg MED area.

### INTEGRATED

#### MD.NET

M.D.net project challenges the currently neglected and undeveloped opportunities of Mediterranean Diet (MD). MD.net's main objective is to enhance the exploration of the MD according to the UNESCO Med Diet Convention, blending comprehensive MD concepts with innovative tools. The project will use both traditional and creative measures (such as sharing economy) starting with the cooperation of the quadruple helix stakeholders in order to lift the MD economy to new quality levels.

### INTEGRATED

#### +RESILIENT

The overall objective of +Resilient is to positively influence and adapt the different structural policy elements governing «clusters with high social vocation and responsiveness» (SVRC) by acting on innovation dynamics led by technology, open data & successful models with social relevance & impact, creating socially-responsive value chains at a transnational level.





**IMPROVING ENERGY EFFICIENCY  
CAPACITIES IN PUBLIC BUILDINGS**





# EFFICIENT BUILDINGS

In Mediterranean regions, buildings represent one of the main sources of Greenhouse Gas (GHG) emissions, especially public buildings (schools, administrative bodies). The majority of such buildings requires heavy upgrading in terms of insulation and cooling systems currently partly financed by national, regional and EU thematic programmes. Projects co-funded by the Interreg MED Programme under this thematic are focusing on increasing the capacity of public buildings owners and managers to develop and implement energy efficiency practices.

The Efficient Buildings community has been created precisely to cope with these issues. Starting from a bottom-up approach, this community, coordinated by the MEDNICE Horizontal project, intends to test and spread good local practices in neighbouring Mediterranean regions and countries. Their objective is to foster synergies among partners and disseminate projects results, maximising their social impact.

LOCATION	SUBTHEMES	KEY TARGET GROUPS
<ul style="list-style-type: none"><li>• Urban Areas</li></ul>	<ul style="list-style-type: none"><li>• Tools and Strategies for efficiency measures in public buildings</li><li>• School buildings as specific targets</li><li>• Financing energy efficiency measures</li></ul>	<ul style="list-style-type: none"><li>• Public Authorities</li><li>• Research Infrastructures</li><li>• Enterprises</li><li>• NGO/Civil Society</li></ul>



STUDY PROJECT



TESTING PROJECTS



TESTING AND CAPITALISING PROJECTS



CAPITALISING PROJECT



## CESBA MED

The project is developing an integrated multi-scale assessment system connecting the urban and building scale to support decision-making processes for sustainable public buildings and neighbourhoods. They are trying to improve the impact of policies, action plans and planning activities of Mediterranean cities. A transnational Passport will be established to measure the progress towards the common global goals (Agenda 2030). CESBA Med will also establish a network of cities to provide the necessary training and guidance to implement the common assessment system at local level.

TOTAL PROJECT BUDGET : € 3 190 375,00  
ERDF PROJECT BUDGET : € 2 711 818,75

### PARTNERS

- LP : City of Torino (IT)
- iiSBE Italia R&D srl (IT)
- Municipality of Udine (IT)
- EnvirobatBDM (FR)
- Auvergne-Rhône-Alpes Energie Environnement (FR)
- Generalitat of Catalonia (ES)
- Municipality Sant Cugat del Vallès (ES)
- University of Malta (MT)
- National Observatory of Athens (GR)
- Association of Common European Sustainable Built Environment Assessment (AT)
- Energy Institute Hrvoje Požar (HR)



## EduFootPrint

EduFootprint aims at improving the capacity of owners and managers of public buildings for better management, planning and verification of energy, through a Life Cycle Assessment approach, implementing energy efficient practices integrated with the local SEAPS. So far, the project partners have collected the baseline data for the footprint calculator and defined the energy plans for the 62 pilot school buildings.

TOTAL PROJECT BUDGET : € 1 200 684,75  
ERDF PROJECT BUDGET : € 934 840,00  
IPA PROJECT BUDGET : € 85 742,05

### PARTNERS

- LP : Provincia di Treviso (IT)
- Regional Energy and Environment Agency from North (PT)
- Institute for Innovation and Development of University of Ljubljana (SI)
- Centre EuroMediterranean for the sustainable development (IT)
- ECTC Efxini Poli – SolidarityCity Network (GR)
- Ambiente Italia srl (IT)
- Institute "Stefanini" Treviso (IT)
- Official College of Industrial Engineers of Western Andalusia (ES)
- European Institute Pashko (AL)



## ENERJ

The ENERJ project is trying to provide an answer to the challenge of the energy efficiency in public buildings, through the development and testing of a methodology supporting the implementation and management of Joint Actions, in the framework of existing local energy plans. So far, based on energy audits performed by all partners, a database has been developed and guidelines elaborated to design joint actions. To facilitate their implementation, training courses for public employees and energy managers will be organised.

TOTAL PROJECT BUDGET : € 2 258 095,00  
ERDF PROJECT BUDGET : € 1 774 498,25  
IPA PROJECT BUDGET : € 144 882,50

### PARTNERS

- LP : Development Agency of Eastern Thessaloniki (GR)
- Andalusian Federation of Towns and Provinces (ES)
- Istrian Regional Energy Agency L.t.d (HR)
- Cyprus Energy Agency (CY)
- GOZO Development Agency (MT)
- Metropolitan City of Capital Rome (IT)
- Goriška Local Energy Agency, Nova Gorica (SI)
- Ministry of Infrastructure and Energy (AL)
- Regional Energy and Environment Agency from North Alentejo (PT)
- Climate Alliance Italy (IT)
- Intermunicipal Community of High Alentejo (PT)



## IMPULSE

IMPULSE introduces an integrated management support system enabling reliable and affordable energy renovation projects for public buildings. So far, IMPULSE has achieved a transnational protocol for conducting affordable energy efficiency plans for public buildings. It has created free-access platforms for public-buildings' classification into typologies, to process energy efficiency indicators. Finally, it has developed virtual libraries of municipal buildings and of representative typologies of partner cities.

TOTAL PROJECT BUDGET : € 2 222 863,00  
 ERDF PROJECT BUDGET : € 1 711 214,90  
 IPA PROJECT BUDGET : € 178 218,65

### PARTNERS

- LP : Centre for Renewable Energy Sources and Saving (GR)
- Municipality of Heraklion (GR)
- Valencia Institute of Building (ES)
- Elche City Council (ES)
- EnvirobatBDM (FR)
- Regional Agency for Equipment and Development Provence - Alpes - Cote d'Azur (FR)
- Municipality of Ravenna (IT)
- Energy Institute Hrvoje Požar (HR)
- City of Osijek (HR)
- City of Mostar (BA)



## NEW FINANCE

The NEW FINANCE project aims to trigger and facilitate new investments in energy efficient building renovation and renewable energy integration in public buildings. To achieve that, the project tries to raise awareness about the benefits of innovative financing mechanisms the importance of private capital inclusion and the need for better energy management in public buildings. So far, they have developed educational videos, an e-platform with good practice examples and a networking tool as well as a Benchmarking report. It will now perform an intensive training campaign.

TOTAL PROJECT BUDGET : € 931 600,37  
 ERDF PROJECT BUDGET : € 702 822,38  
 IPA PROJECT BUDGET : € 89 037,93

### PARTNERS

- LP : North-West Croatia Regional Energy Agency (HR)
- Catalan Energy Institute (ES)
- Abruzzo Regional Energy Agency (IT)
- Malta Intelligent Energy Management Agency (MT)
- Energy Agency of Savinjska, Šaleška and Koroška Region (SI)
- Development Agency of Una-Sana Canton (BA)



## PrioritEE

The PrioritEE project aims at reinforcing the capacities of public administrations in selecting and implementing cost-effective energy planning measures. Partners are working intensively on the development and testing of a toolbox to manage and monitor energy consumption, to assess the cost-effectiveness of a predefined set of EE and RES measures (and alternatives), and to prioritize investments.

TOTAL PROJECT BUDGET : € 2 234 295,85  
 ERDF PROJECT BUDGET : € 1 899 151,48

### PARTNERS

- LP : National Research Council of Italy, Institute of Methodologies for Environmental Analysis (IT)
- New University of Lisbon (PT)
- Centre for Renewable Energy Sources and Saving (GR)
- SEL, Energy Company in Basilicata (IT)
- North-West Croatia Regional Energy Agency (HR)
- University of Zaragoza (ES)
- Regional Development Agency of Western Macedonia (GR)
- Lezíria do Tejo Intermunicipal Community (PT)
- City of Karlovac (HR)
- Provincial Government of Teruel (ES)



## SHERPA

SHERPA aims to reinforce the capacities of Interreg MED public administrations to improve energy efficiency in public buildings. So far, its partners have been testing a common methodology of energy renovation of public buildings in around 100 regional buildings. They will then expand and apply the methodology to municipal buildings and prepare a Joint Action Plan for all Mediterranean Public Buildings.

TOTAL PROJECT BUDGET : € 3 591 689,00  
ERDF PROJECT BUDGET : € 3 052 935,97

### PARTNERS

- LP : Generalitat of Catalonia (ES)
- International Centre for Numerical Methods in Engineering (ES)
- Valencian Institute of Building (ES)
- Conference of Peripheral Maritime Regions of Europe (FR)
- National Association of Local Authorities, Associations and Companies for Waste Management, Energy Management and District Heating (FR)
- Emilia Romagna Region (IT)
- Lazio Region (IT) / • Abruzzo Region (IT)
- Ministry for Gozo (MT)
- Dubrovnik Neretva Regional Development Agency (HR)
- Centre for Renewable Energy Sources and Saving (GR)
- Region of Crete (GR)



## SISMA

SISMA helps regional and local administrations to finance investment projects on deep energy retrofitting of public buildings and to prioritize interventions. An easy to-use Excel® tool was developed to assess economic return on investments in energy efficiency and to calculate the minimum amount of public subsidy needed to make an investment bankable, encouraging public-private partnerships.

TOTAL PROJECT BUDGET : € 600 000,00  
ERDF PROJECT BUDGET : € 467 840,00  
IPA PROJECT BUDGET : € 42 160,00

### PARTNERS

- LP : Informest (IT)
- Nova Gorica Local Energy Agency (SI)
- Ribera Consortium (ES)
- Sophia Antipolis Fondation (FR)
- Florence Energy Agency (IT)
- Centre for Renewable Energy Sources and Saving (GR)
- Energy Mangment Agency of Friuli Venezia Giulia (IT)
- Agency for Economic Development of Bosnia Herzegovina (BA)
- French Alternative Energies and Atomic Energy Commission (FR)



## STEPPING

STEPPING project aims to increase the adoption of "Energy Performance Contract" (EPC) investment schemes specifically designed for public buildings refurbishment in the Interreg MED area. So far, the project has delivered a report on EPC best practices and an EPC pilot implementation handbook. Partners are now selecting municipalities in order to develop eight EPC investment plans and four pilot actions to test the procurement procedures.

TOTAL PROJECT BUDGET : € 1943 112, 50  
ERDF PROJECT BUDGET : € 1 775 411,66

### PARTNERS

- LP : Piemonte Region (IT)
- Environment Park (IT)
- Energy and Sustainable Development Agency (IT)
- Business Support Centre Ltd, Regional Development Agency (SI)
- Huelva County Council (ES)
- Malta Intelligent Energy Management Agency (MT)
- Aegean Energy & Environment Agency (GR)
- Regional energy and environment agency in Auvergne - Rhône-Alpes (FR)
- Regional Energy and Environment Agency from North Alentejo (PT)



## TEESCHOOLS

TEESCHOOLS aims at providing new solutions to Local Authorities both in technical and financial terms to implement Nearly Zero Energy Building (NZEB) renovation activities in Mediterranean Schools. Their innovative approach consists in setting up an integrated set of user-friendly but scientifically sound tools: a pre-audit tool for simplify the energy audits, a carbon footprint calculator based on buildings' life cycle information, an innovative database of BAT for the renovation of school buildings, tailored financing models and highly qualified trainings.

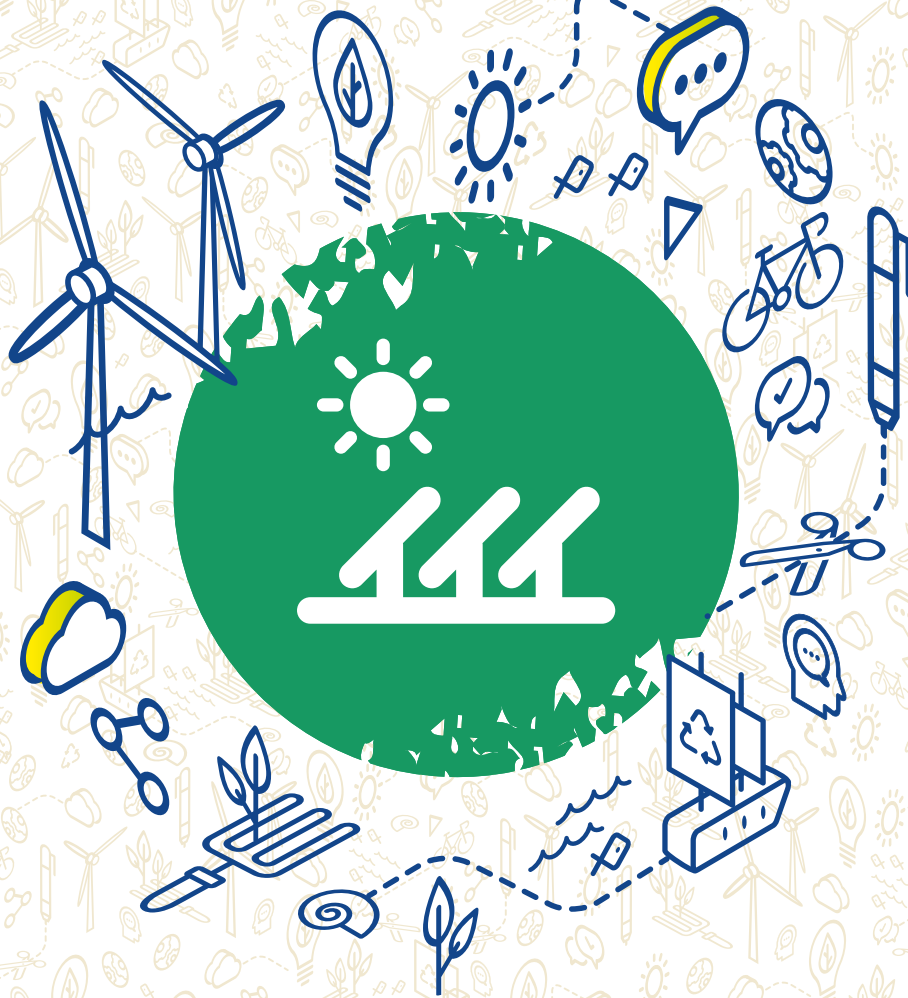
---

TOTAL PROJECT BUDGET : **€ 2 840 000,00**  
ERDF PROJECT BUDGET : **€ 2 235 500,00**  
IPA PROJECT BUDGET : **€ 178 500,00**

---

### PARTNERS

- LP : Italian National Agency for New Technologies, Energy and Sustainable Economic Development - ENEA **(IT)**
- Valencian Federation of Municipalities and Provinces **(ES)**
- ECTC Efxini Poli - SolidarCity NETWORK **(GR)**
- City of Split **(HR)**
- Department for Development and International Projects of Government of Zenica-Doboj Canton **(BA)**
- Cyprus Energy Agency **(CY)**
- Ribera Consortium **(ES)**
- HEP ESCO .Ltd **(HR)**
- Municipality of Castel San Pietro Terme **(IT)**
- Chamber of Craft and Trade PACA Region **(FR)**
- Living Prospects Development & Environmental Services Ltd **(GR)**



**INCREASING RENEWABLE ENERGY SOURCES IN THE ENERGY MIX**



# RENEWABLE ENERGY

Mediterranean islands are facing several energy challenges such as dependency, security of supply, interconnection with mainland and growing demand, among others.

Therefore, projects co-financed under this thematic of the Interreg MED Programme are mainly aiming to support actions that increase the sharing of renewable local energy sources in energy mix strategies and plans within MED territories.

The Renewable Energy community is led by the GREENCAP Horizontal project, whose overall objective is to enhance and capitalise the results of the projects it is coordinating. The primary focus of this thematic is the dissemination of its findings on a wider scale, and more particularly in islands and rural areas.

LOCATIONS	SUBTHEMES	KEY TARGET GROUPS
<ul style="list-style-type: none"><li>• Island</li><li>• Rural Areas</li></ul>	<ul style="list-style-type: none"><li>• Technology &amp; smart grids</li><li>• Local Renewable Energy Cluster</li><li>• Policies &amp; Governance models</li></ul>	<ul style="list-style-type: none"><li>• Public Authorities</li><li>• Research Infrastructures</li><li>• Enterprises</li><li>• NGO/Civil Society</li></ul>



STUDY  
PROJECT



TESTING  
PROJECTS



CAPITALISATION  
PROJECT



## COMPOSE

COMPOSE contributes to an increased sustainable RES (Renewable Energy Sources) planning capacity at the decision-making and planning-expert levels.

It builds on existing experience and know-how from previous projects and initiatives by promoting the development of local business in combination with the development of local added value chains. It provides a RES development planning synthesis model and therefore the increase of renewable energy mix in selected areas.

TOTAL PROJECT BUDGET : € 2 551 244,00

ERDF PROJECT BUDGET : € 1 905 580,17

IPA PROJECT BUDGET : € 262 977,25

### PARTNERS

- LP : Slovene Chamber of Agriculture and Forestry (SI)
- Kyoto Club (IT)
- Lakatamia Municipality (CY)
- Technical University of Crete (GR)
- Energy and Environment Agency of Arrábida (PT)
- Energy Agency North (HR)
- Agricultural University of Tirana (AL)
- Granollers City Council (ES)
- Srebrenik Municipality (BA)
- Institute for Strategic Studies and Prognoses (ME)
- Group for the Environment, Renewable Energy and Solidarity (FR)



## ForBioEnergy

ForBioEnergy develops innovative planning tools and operating procedures aimed to exploit the full potential of biomass in protected areas. Therefore, it fosters the development of bio-energy and at the same time preserves the biodiversity of the natural areas.

Project actions are implemented through a participatory and shared process that involves the public and private key stakeholders.

TOTAL PROJECT BUDGET : € 2 048 847,48

ERDF PROJECT BUDGET : € 2 048 847,48

### PARTNERS

- LP : Sicily Region (IT)
- Municipality of Petralia Sottana Envidand (ES)
- Slovenian Forestry Institute (SI)
- Regional Development Agency Green Kast Ltd (SI)
- The Forestry Municipalities -Association of Comunitat Valenciana (ES)
- Zadar County (HR)
- Public Institution Nature Park Velebit (HR)



## LOCAL4GREEN

LOCAL4GREEN supports Local Authorities to design and implement innovative fiscal policies, intended to promote the use of renewable energy sources in both the public and private sector.

For now, LOCAL4GREEN has produced a handbook with the participative methodology to formulate the fiscal policies to promote RES and, following this handbook, each partner has developed the design of fiscal policies to implement in their pilot municipalities.

TOTAL PROJECT BUDGET : € 2 013 423,15

ERDF PROJECT BUDGET : € 1 637 308,65

IPA PROJECT BUDGET : € 74 101,05

### PARTNERS

- LP : Valencian Federation of Municipalities and Provinces (ES)
- MUSOL Foundation (ES)
- Malta Intelligent Energy Management (MT)
- North-West Croatia Regional Energy Agency (HR)
- Development Agency of Eastern Thessaloniki's Local Authorities (GR)
- Lazio Region Association of Cities and Municipalities (IT)
- Building and Civil Engineering Institute (SI)
- Cyprus Energy Agency (CY)
- University of Algarve (PT)
- Association of Albanian Municipalities (AL)





## PEGASUS

PEGASUS is a cooperation project where public and private bodies involved in the energy sector try to design the business model of the microgrids in the future power system. This goal is being achieved through a simulation in seven sites of the microgrid behaviour and interaction of its members: consumers, prosumers and prosumagers. Currently the energy data are being collected and analysed.

TOTAL PROJECT BUDGET : € 1 868 512,00  
ERDF PROJECT BUDGET : € 1 499 888,20

### PARTNERS

- LP : Municipality of Potenza (IT)
- Centre for Renewable Energy Sources and Saving (GR)
- Malta Intelligent Energy Management Agency (MT)
- Auvergne-Rhône-Alpes Energie Environnement (FR)
- Energy Agency of Podravje (SI)
- Demepa srl (IT)
- University of Cyprus (CY)
- Municipality Preko (HR)
- European Federation of Agencies and Regions for Energy and the Environment (BE)
- Abengoa Innovación S.A. (ES)



## PRISMI

PRISMI aims to support local authorities in Interreg MED islands in planning their transition towards low carbon and climate change resilient energy systems in a cost-effective way. To do so, PRISMI developed an integrated toolkit to assess and map RES for the targeted elaboration of energy scenarios and a techno-economic feasibility analysis. A network has been established to power up this ambitious transition.

TOTAL PROJECT BUDGET : € 599 573,00  
ERDF PROJECT BUDGET : € 509 637,06

### PARTNERS

- LP : Sapienza University of Rome (IT)
- Centre for Renewable Energy Sources and Saving (GR)
- University of Zagreb (HR)
- Cyprus Energy Agency (CY)
- Piraeus University of Applied Sciences (GR)
- Malta Intelligent Energy Management Agency (MT)
- Municipality of Favignana (IT)



## StoRES

StoRES foresees the development of an optimal policy for the effective integration of photovoltaics (PV) and energy storage systems (ESS) via testing smart solutions in six Interreg MED islands and rural areas. It aims to increase PV penetration in the energy mix of islands and rural areas by integrating PV and ESS under an optimal market policy by removing the constraints of grid reliability and RES intermittency.

TOTAL PROJECT BUDGET : € 1 991 077,25  
ERDF PROJECT BUDGET : € 1 692 415,67

### PARTNERS

- LP : University of Cyprus (CY)
- Aristotle University of Thessaloniki (GR)
- Regional Energy and Environment Agency of Algarve (PT)
- Government of Aragon (ES)
- Municipality of Slovenska Bistrica (SI)
- Auvergne-Rhône-Alpes Energie Environnement (FR)
- Ministry of Energy, Commerce, Industry and Tourism (CY)
- Electricity Authority of Cyprus (CY)
- Municipality of Ussaramanna (IT)



**INCREASING LOW CARBON URBAN  
TRANSPORT SYSTEMS**



# URBAN TRANSPORTS

The increase in population during touristic seasons is changing Mediterranean cities. They are often unprepared and need to adapt to provide sustainable transit systems between city centres, ports and the neighbourhoods. However, cities also have to deal with the necessary preservation of their natural and cultural heritage, particularly in their historical centres.

Projects co-financed under the Urban Transports thematic especially address issues related to the use and access to low carbon and multimodal transport systems for the different categories of population and territories.

The Urban Transports community is coordinated by GO SUMP project, which acts as a bridge between projects and builds the community, through synergies and networking.

This thematic community works towards the achievement of tailor-made sustainable urban mobility plans and solutions in the MED area.

LOCATION	SUBTHEMES	KEY TARGET GROUPS
<ul style="list-style-type: none"> <li>• Urban Areas</li> </ul>	<ul style="list-style-type: none"> <li>• Low carbon transport modes</li> <li>• Services mobility in tourist destinations</li> <li>• Participatory transport planning</li> <li>• Attraction ICT tools for mobility</li> </ul>	<ul style="list-style-type: none"> <li>• Public Authorities</li> <li>• Research Infrastructures</li> <li>• Enterprises</li> <li>• NGO/Civil Society</li> </ul>



STUDY



TESTING  
PROJECTS



TESTING AND  
CAPITALISING  
PROJECT



INTEGRATED



## CAMP-sUmp

CAMP-sUmp is testing new and innovative ways to manage traffic flows to and from university campuses and their integration into the urban areas in the Mediterranean. The project aims to improve sustainable urban planning instruments through an innovative mobility strategy for flows related to university campuses, while reducing externalities and negative impacts on the environment.

TOTAL PROJECT BUDGET : € 545 150,00  
ERDF PROJECT BUDGET : € 463 377,50

### PARTNERS

- LP : Magna Graecia Foundation Catanzaro University (IT)
- National Technical University of Athens (GR)
- University of Malta (MT)
- University of Valencia (ES)
- University of Split (HR)
- University of Cyprus (CY)
- Alma Mater Studiorum, University of Bologna (IT)



## LOCATIONS

LOCATIONS contributes to decongest the traffic of cruise destinations and to decrease greenhouse gases emissions through a larger use of innovative sustainable transport solutions, thus improving the overall quality of life of both citizens and passengers, and the attractiveness of Mediterranean cruise destinations.

TOTAL PROJECT BUDGET : € 3 012 605,75  
ERDF PROJECT BUDGET : € 2 334 793,39  
IPA PROJECT BUDGET : € 225 921,50

### PARTNERS

- LP : AREA Science Park (IT)
- MALAGAPORT (ES)
- Lisboa E-Nova (PT)
- Municipality of Ravenna (IT)
- Research Centre for Energy Resources and Consumption (ES)
- Regional Energy Agency Kvarner (HR)
- Port of Rijeka Authority (HR)
- Durres Port Authority (AL)
- City of Zadar (HR)
- Albanian Institute of Transport (AL)
- Port System Authority of the Eastern Adriatic Sea (IT)
- Lisbon City Council (PT)



## MOBILITAS

The project works to reduce the negative impact on environment of the tourism flows in seaside resorts. This problem will be tackled by the elaboration of mobility scenarios, documents on sustainable tourism mobility, using IT tools and introducing electrical and sharing mobility solutions. Mobility scenarios have already been elaborated. They are able to predict future tourism flows as well as modal sharing and emissions from transport.

TOTAL PROJECT BUDGET : € 2 468 337,75  
ERDF PROJECT BUDGET : € 2 098 087,10

### PARTNERS

- LP : Regional Development Centre of Koper (SI)
- City of Dubrovnik (HR)
- Zadra Nova, Zadar County Development Agency (HR)
- Municipality of Misano Adriatico (IT)
- Paragone Europe (MT)
- IUAV University of Venice (IT)
- P.Platres Community Council (CY)
- Energies 2050 (FR)
- Municipality of Piraeus (GR)
- Rimini Strategic Plan Agency (IT)



## MOTIVATE

MOTIVATE project aims to make mobility planning in the Interreg MED region more environmentally friendly, participatory and responsive to changes. Through a web platform and a mobile application, the travellers (residents & tourists) will be actively involved in all the planning steps. The testing phase will lead to the development of a common model using social networks and crowdsourcing techniques for the development and enhancement of SUMP.

TOTAL PROJECT BUDGET : € 1.806.893,75  
ERDF PROJECT BUDGET : € 1 535 859,70

### PARTNERS

- LP : Municipality of Almada (GR)
- Centre for Research and Technology Hellas (GR)
- MemEx Srl (IT)
- Rhodes Municipality (GR)
- Aegean Energy and Environment Agency (GR)
- Tiemme Spa (IT)
- Larnaka Municipality (CY)
- Municipality of Ioannina (GR)



## REMEDIO

REMEDIO project intends to improve mobility solutions in four Interreg MED cities: Treviso, Thessaloniki, Loures and Split. How? By testing concrete mobility actions in those cities. REMEDIO is actively engaging institutions, stakeholders and citizens, in order to improve their multi-modal and low carbon mobility, freight logistic and environmental quality. The REMEDIO Tool is almost ready to be validated in Treviso and several engaging events have been organised through all pilot-areas.

TOTAL PROJECT BUDGET : € 2 215 512,50  
ERDF PROJECT BUDGET : € 1 883 185,63

### PARTNERS

- LP : Regional Agency for Environment Protection in Veneto Region (IT)
- Municipality of Treviso (IT)
- Aristotle University of Thessaloniki (GR)
- Instituto Superior Técnico (PT)
- University of Seville (ES)
- Metropolitan Development Agency of Thessaloniki S.A. (GR)
- City of Split (HR)
- Municipality of Loures (PT)



## SUMPORT

SUMPORT tackles the issue of congestion and air pollution in port cities, aggravated by port-originated traffic, by providing sustainable alternatives to individual car transport. Pilot actions are about to be launched. They will directly benefit citizens and visitors, and will allow the evaluation of the potential of long-term sustainable mobility planning. Training courses to improve skills and competences of local actors on SUMPs are also being implemented.

TOTAL PROJECT BUDGET : € 2 358 759,20  
ERDF PROJECT BUDGET : € 1 724 487,81  
IPA PROJECT BUDGET : € 280 457,50

### PARTNERS

- LP : Central European Initiative (IT)
- Durres Municipality (AL)
- Region of Epirus (GR)
- Institut for Transport and Logistics Foundation (IT)
- City of Limassol (CY)
- Valanciaport Foundation for Research, Promotion and Commercial Studies of the Valencian region (ES)
- Aristotle University of Thessaloniki (GR)
- Municipality of Koper (SI)
- Foundation of the Valencian Community to promote strategic urban development and innovation (ES)
- City of Kotor (ME)

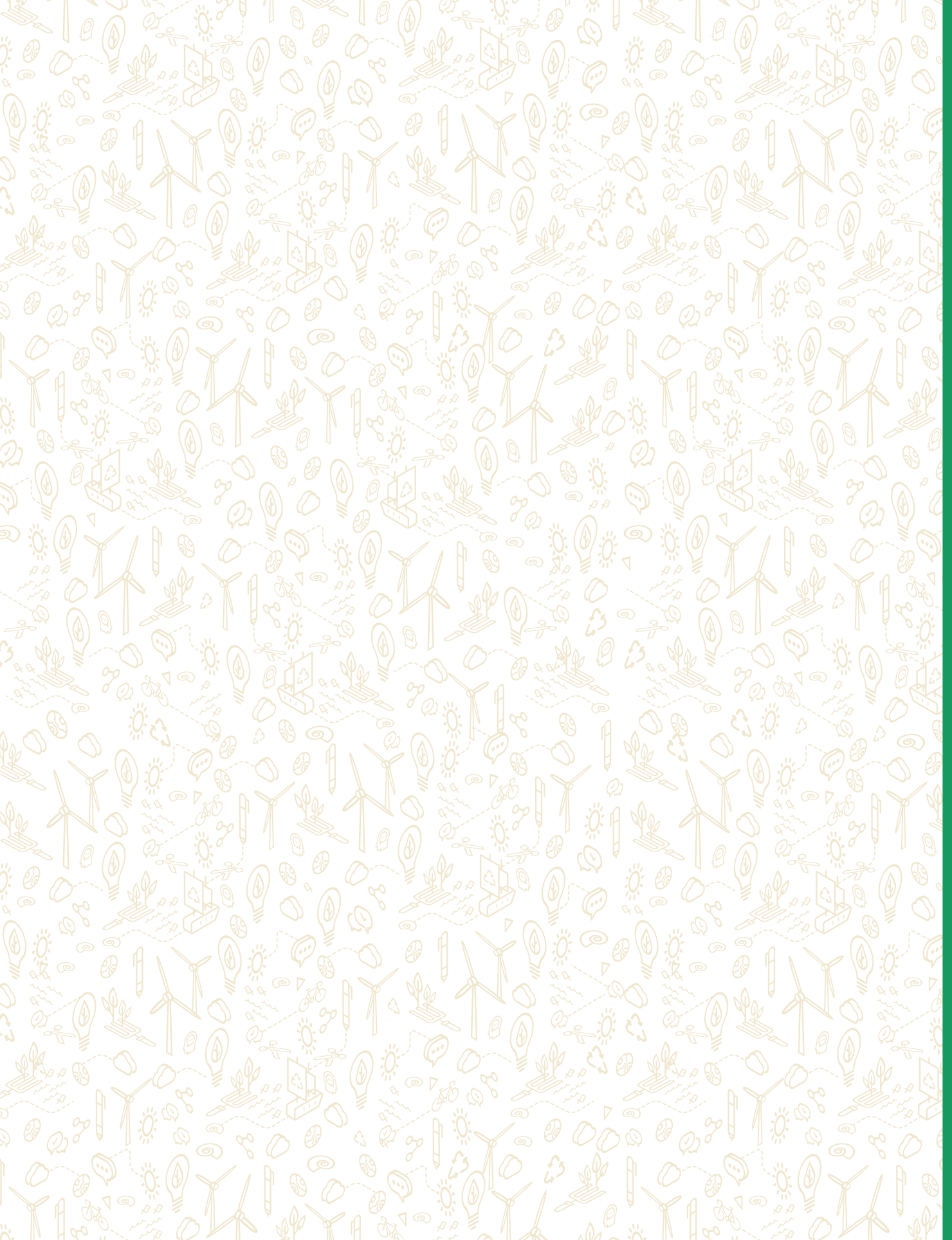


STARTING IN 2018

INTEGRATED

### **EnerNETMob**

EnerNETMob aims to draft, test and improve parallel "Sustainable Electromobility Plans" according to common standards and low carbon policies, in order to set an "Interregional Electromobility Network" crossing cities of all the Interreg MED area. The project promotes sharing mobility and land-sea intermodality using electric transport systems, by implementing interurban and interregional pilot networks of Electric Vehicles Supply Equipment (EVSE) also co-powered by Renewable Energy Sources. It will develop electromobility solutions and will test pilot actions to overcome medium-trip limitations and to coordinate future investments on electric transport.





**ENHANCING SUSTAINABLE  
COASTAL AND MARITIME TOURISM**





# SUSTAINABLE TOURISM

In the Mediterranean, the tourism sector is a strategic asset, as it offers great opportunities for economic growth and employment. However, it can also entail long-term negative transformations on local economies, societies and ecosystems. Indeed, despite its economic and social importance, tourism development is exerting pressure on natural and built environment. This pressure may threaten the quality of life of local populations, degrade the tourism assets and consequently, negatively affect future tourism developments. Therefore, effective strategies and targeted integrated actions should be developed and implemented across the Mediterranean region.

For this reason, projects under this thematic shall ensure that the impact of these activities on natural and cultural heritage are taken into account in the development of coastal and maritime tourism.

In this perspective, the Interreg MED Sustainable Tourism community, coordinated by BleuTour-Med\_C3, is leading its 17 Modular Projects in the development of common actions and policies for promoting an innovative and sustainable tourism in the Mediterranean. The community actions could be summarised into three actions: getting tourist off the beaten tracks, slowing down tourism and adapting cities and infrastructure to welcome millions of tourists.

LOCATION	SUBTHEMES	KEY TARGET GROUPS
<ul style="list-style-type: none"><li>• Coastal Areas</li></ul>	<ul style="list-style-type: none"><li>• Sustainable tourism policies</li><li>• Alternative tourism strategies</li><li>• Integrated management of tourism development</li><li>• Sustainable water, waste and energy management</li></ul>	<ul style="list-style-type: none"><li>• Public Authorities</li><li>• Research Structures</li><li>• Enterprises</li><li>• NGO/Civil Society</li></ul>

**2**  
STUDY  
PROJECTS

**6**  
STUDY  
AND TESTING  
PROJECTS

**3**  
TESTING  
PROJECTS

**3**  
TESTING AND  
CAPITALISING  
PROJECTS

**1**  
CAPITALISING  
PROJECT

**2**  
INTEGRATED  
TERRITORIAL  
PROJECTS



## ALTER ECO

Alter Eco's objective is to improve the balance between tourist attraction as a source of economic growth and the preservation of the classic values of the Mediterranean city as an example of sustainability. It is trying to reach this goal through the implementation of alternative tourist strategies in six pilot sites, co-designed and implemented by public and private stakeholders. The project's results will support policy makers to make more informed and integrated decisions on tourism governance.

TOTAL PROJECT BUDGET : € 2 293 630,00  
ERDF PROJECT BUDGET : € 1 949 585,50

### PARTNERS

- LP : Comunidad Valenciana Region (ES)
- Málaga City Council (ES)
- Municipality of Genoa (IT)
- Ca' Foscari University of Venice (IT)
- City of Dubrovnik (HR)
- Larnaca-Famagusta Districts Development Agency (CY)
- Aristotle University of Thessaloniki (GR)
- South Aegean Region (GR)
- The European City of Culture, Tourism and Development (FR)
- Observatory on Tourism in the European Islands (IT)



## BLUEISLANDS

BLUEISLANDS project aims to develop effective ways to mitigate the impact of the seasonal variation of waste generated on Mediterranean islands. During the first year, BLUEISLANDS measured the correlation of tourism and waste generation, through analysis of micro-plastics and marine litter on 18 selected beaches, and an investigation of the quality of coastal seawater through short-term macro algae deployments. As a next step, the project is developing action plans for each of the nine partner islands to promote sustainable tourism and circular economy loops.

TOTAL PROJECT BUDGET : € 2 755 320,41  
ERDF PROJECT BUDGET : € 2 342 022,35

### PARTNERS

- LP : Department of Environment Ministry of Agriculture, Rural Development and Environment (CY)
- Association of Cities and Regions for sustainable Resource Management (BE)
- Rhodes Municipality (GR)
- Network of the Insular CCI of the EU (GR)
- Municipality of Mykonos (GR)
- Region of Crete (GR)
- Primorsko-goranska županija (HR)
- Taormina Etna Consortium (IT)
- Consorzio Nazionale Inteuniversitario per le Scienze del Mare (IT)
- Regione Sardegna (IT)
- Wasteserv Malta Ltd (MT)
- Ea éco-entreprises (FR)
- Council of Mallorca (ES)
- Universitat Autònoma de Barcelona (ES)



## BLUEMED

BLUEMED aims to study the natural, cultural, and legislative conditions of selected locations in the Mediterranean region. It also aims at protecting marine ecosystem and underwater cultural resources, while making them publicly accessible by promoting the concept of Underwater Museums and organised underwater archaeological sites. Finally, BLUEMED wants to promote a sustainable and responsible model of tourism development for selected regions of the Mediterranean.

TOTAL PROJECT BUDGET : € 2 797 549,00  
ERDF PROJECT BUDGET : € 2 377 916,66

### PARTNERS

- LP : Region of Thessaly (GR)
- Ephorate of Underwater Antiquities (GR)
- Atlantis Consulting S.A. (GR)
- University of Patras (GR)
- University of Cyprus (CY)
- University of Calabria (IT)
- Ministry of Cultural Heritage and Activities and Tourism of Italy (IT)
- University of Zagreb (HR)
- Faculty of Electrical Engineering and Computing; Dubrovnik Neretva Regional Development Agency (HR)
- Foundation University Enterprise of the Region of Murcia (ES)
- Province of Crotone (IT)



## CASTWATER

Castwater aims at supporting sustainable tourism policies and practices on water efficiency in coastal areas. Its transnational challenge is to reduce the impact of tourism activities on environmental heritage and to improve the management of water resources in the tourism sector. At this stage, Castwater ended its first module (studying) and has just started the testing and transferring one.

TOTAL PROJECT BUDGET : € 2 388 116,60  
ERDF PROJECT BUDGET : € 2 029 899,12

### PARTNERS

- LP : Municipality of Rethymno (GR)
- Emilia Romagna region (IT)
- Veneto Region (IT)
- Water Board of Lemesos (CY)
- University of Patras (GR)
- EuromediterraneanWater Institute Foundation (ES)
- Institute of Agriculture and Tourism (CR)
- Foundation of the Valentian Community to promote Strategic urban development and Innovation (ES)
- Department of Council of Hérault (FR)
- Malta Regional Development and Dialogue Foundation (MT)
- Sustainable Energy and Water Conservation Unit (MT)



## CO-EVOLVE

CO-EVOLVE aims at analysing and promoting the co-evolution of human activities and natural systems in touristic coastal areas. It couples an analysis of threats and enabling factors for sustainable tourism with local studies and pilot actions in seven representative Pilot Areas, to demonstrate the effectiveness of an Integrated Coastal Zone Management/ Maritime Spatial Planning-based planning process.

TOTAL PROJECT BUDGET : € 3 012 605,75  
ERDF PROJECT BUDGET : € 2 334 793,39  
IPA PROJECT BUDGET : € 225 921,50

### PARTNERS

- LP : Region of East Macedonia & Thrace (GR)
- Conference of Peripheral Maritime Regions of Europe (FR)
- University of Thessaly (GR)
- Emilia-Romagna Region (IT)
- Priority Actions Programme Regional Activity Centre (HR)
- Valenciaport Foundation (ES)
- Po Delta Park Veneto Region (IT)
- Dubrovnik Neretva Regional Development Agency (HR)
- Department of Hérault (FR)
- Public Institution for Coordination and Development of Split Dalmatia County (HR)
- University of Venice (IT)
- National Research Council (IT)



## CONSUME-LESS

CONSUME-LESS aims to contribute to sustainable water, energy and waste management with particular focus on the reduction in the consumption of water and energy as well as waste reduction through prevention of waste generation in the tourism sector. The project foresees the creation of a "Consume-Less" label as an indication that environmental concerns could be translated into tourism market advantages. The idea is to promote and heighten tourist awareness on certified hotels, bars and restaurants through the innovative marketing campaign of the Consume-Less label.

TOTAL PROJECT BUDGET : € 2 635 000,00  
ERDF PROJECT BUDGET : € 1 981 250,00  
IPA PROJECT BUDGET : € 159 800,00

### PARTNERS

- LP : Sustainable Energy and Water Conservation Unit (MT)
- Malaga County Council (ES)
- EGTG Efxini Poli SolidarCity Network (GR)
- Euro Mediterranean Center for the sustainable development (IT)
- Ambiente Italia srl (IT)
- Provincial Government of Malaga (ES)
- Municipality of Naxos and Small Cyclades islands (GR)
- Saranda Municipality (AL)
- Sicilian Region (IT)
- Ministry of Gozo (MT)



## DestiMED

DestiMED provides Mediterranean protected areas and their private sector partners with the tools they need to develop, manage, and promote high quality ecotourism packages, both at local scale and together in a regional network. These products generate positive outcomes for conservation and communities, by strengthening the local economy while minimising impacts on natural and cultural resources.

TOTAL PROJECT BUDGET : € 2 500 000,00  
ERDF PROJECT BUDGET : € 2 006 000,00

### PARTNERS

- LP : Regione Lazio **(IT)**
- Federparchi **(IT)**
- International Union for Conservation of Nature **(ES)**
- MedPAN **(FR)**
- NAPA Albania **(AL)**
- WWF Adria **(HR)**
- WWF Mediterranean **(IT)**



## EMbleMatic

EMbleMatic aims to create and test a new and radically different tourism offer based on the common characteristics of nine coastal Mediterranean mountains in order to produce an alternative to the traditional sun-and-sea model. At this stage, partners have implemented local participative workshops and case studies in each selected mountains to define the emblematic elements and the common methodological framework.

TOTAL PROJECT BUDGET : € 2 975 571,50  
ERDF PROJECT BUDGET : € 2 402 168,44  
IPA PROJECT BUDGET : € 127 067,35

### PARTNERS

- LP : Syndicat Mixte CANIGÓ Grand Site **(FR)**
- Himara Municipality **(AL)**
- Development Agency of Berguedà **(ES)**
- GAL Gran Sasso Velino Soc. Cons.
- Ar.I... **(ES)**
- PIERIKI ANAPTIXIAKI S.A.-O.L.A. **(GR)**
- Gal Terre dell'Etna e dell'Alcantara S.C.C.A.R.L **(IT)**
- Consell de Mallorca **(ES)**
- AKOMM-PSILORITIS S.A. **(GR)**
- Estudis d'hoteleria i turisme CETT S.A. **(ES)**
- Métropole d'Aix Marseille Provence **(FR)**



## MEDCYCLETOUR

The MedCycleTour project is based on the EuroVelo 8 - Mediterranean route, a cycle route that crosses seven countries from Spain to Cyprus. While the Mediterranean region is an already well-known destination for tourism in general, it is unfortunately far behind other markets concerning cycle tourism. The aim of the project is to develop this sector by providing transnational tools, delivering strategies, knowledge and support to fully develop the potential of cycle tourism across the whole Mediterranean region.

TOTAL PROJECT BUDGET : € 2 578 131,89  
ERDF PROJECT BUDGET : € 2 191 415,28

### PARTNERS

- LP : Andalusian Government **(ES)**
- Catalonia Region **(ES)**
- Alpes Maritimes Department **(FR)**
- Friuli Venezia Giulia Region **(IT)**
- Province of Mantova **(IT)**
- Regional Development Center of Koper **(SI)**
- Croatian National Tourism Board **(HR)**
- Cluster for Eco-social Innovation and Development **(HR)**
- Cyprus Tourism Organisation **(CY)**
- Western Greece Region **(GR)**
- European Cyclists' Federation **(BE)**



## MEDFEST

The Mediterranean area is commonly represented by the sea, sand and sun, but this is quite restrictive. The MEDFEST partnership is collecting practical knowledge on sustainable culinary experiences and learning from existing social innovations. It aims at supporting local communities in organising sustainable culinary experiences which will bring them satisfaction and economic benefit. Its motto: share-cooperate-learn.

TOTAL PROJECT BUDGET : € 2 218 473,66  
ERDF PROJECT BUDGET : € 1 885 702,61

### PARTNERS

- LP : Research Centre of the Slovenian Academy of Sciences and Arts (SI)
- Rural Development Association (IT)
- Purpan Engineering School (FR)
- University of Barcelona (ES)
- In Loco Association (PT)
- Agency for Rural Development of Istria Ltd. Pazin (HR)
- Technical Institute of Heraklion Chamber of Commerce and Industry (GR)
- Troodos Network Thematic Centres (CY)



## MITOMED +

The main objective of MITOMED+ is to enhance the sustainability and responsibility of Maritime and Coastal tourism. To achieve this, the project intends to:

- increase knowledge and social dialogue regarding the development of the M&C tourism in each partner region for better decision-making;
- improve M&C tourism planning at destination level and its coordination for a transnational governance;
- mainstream its result into local, regional and national policies;
- set up an Interreg MED M&C tourism model.

TOTAL PROJECT BUDGET : € 2 650 000,00  
ERDF PROJECT BUDGET : € 2 252 500,00

### PARTNERS

- LP : Regione Toscana (IT)
- Association of Tuscan Municipalities (IT)
- National Research Council - Institute of Biometeorology (IT)
- Institute of Agriculture and Tourism (HR)
- Larnaca-Famagusta District Development Agency (CY)
- Conference of peripheral maritime regions of Europe (FR)
- Public Enterprise for the Management of -Tourism and Sport of Andalusia (ES)
- Girona University (ES)
- Network of European Regions for a Sustainable and Competitive Tourism (BE)



## ShapeTourism

ShapeTourism aims to improve the tourism knowledge framework, providing both analytical and operational tools that help identify innovative policies guaranteeing the sustainability of tourism development processes. This approach allows destinations to find the right balance between, sometimes divergent, public and private interests. Its achievements are a Smart Integrated Tourism Data System, a Participative Decision Support System and a ShapeTourism Protocol for Destination Marketing organisations.

TOTAL PROJECT BUDGET : € 598 536,50  
ERDF PROJECT BUDGET : € 508 756,04

### PARTNERS

- LP : Ca' Foscari University of Venice (IT)
- University of Algarve (PT)
- Italian Association of the Council of European Municipalities and Region Veneto Federation (IT)
- University of Split (HR)
- Cyprus Center for European and International Affairs (CY)
- Research Centre of the Slovenian Academy of Sciences and Arts (SI)
- University of Malaga (ES)



## SIROCCO

SIROCCO project intends to tackle the main problems that prevent the Mediterranean from exploiting the full potential of Cruise Tourism by providing:

- An integrated view of the current state of Mediterranean cruise tourism and its impacts,
- A foresight of Mediterranean cruise tourism for the following decades,
- Transferable recommendations on developing sustainable & responsible Cruise Value Chains in the Interreg MED area,
- Coordinated strategies & policies at regional and transnational level regarding the development of a sustainable and responsible cruise maritime/coastal tourism.

TOTAL PROJECT BUDGET : € 600 000,00

ERDF PROJECT BUDGET : € 510 000,00

### PARTNERS

- LP : Public Institution RERA S.D. for Coordination and Development of Split Dalmatia County (HR)
- Centre for Research and Technology Hellas (GR)
- South Aegean Region (GR)
- Larnaca-Famagusta District Development Agency (CY)
- Regione Lazio (IT)
- Port Authority of Civitavecchia (IT)
- Fundación Valenciaport (ES)



## TOURISMED

TOURISMED is a project aiming at testing and transferring a fishing tourism business model in Mediterranean coastal territories as a way to promote a sustainable approach to tourism, while fostering the preservation of the marine ecosystem and traditional fishing culture. Facing challenges such as the worrying depletion of marine resources, the decline of the artisanal fishing sector and the negative impacts of tourism, the project's expected results will deal with an improved use of resources by artisanal fishers, a diversification of income in the sector and a better valorisation of coastal traditional heritage and local seafood, its replication in the concerned area.

TOTAL PROJECT BUDGET : € 2157 900,00

ERDF PROJECT BUDGET : € 98 897,50

IPA PROJECT BUDGET : € 98 897,50

### PARTNERS

- LP : Municipality of Trabia (IT)
- International Promotion Sicily-World - PRISM (IT)
- Promimpresa srl (IT)
- Delfi Partners & Co (CY)
- University of Piraeus (GR)
- Cyprus University Of Technology (CY)
- Durres Municipality (AL)
- Italian Chamber of Commerce for France in Marseille (FR)
- Petra Patrimonia Corsica (FR)
- Haliéus (IT)
- Valenciaport Foundation (ES)

**STARTING IN 2018**

CAPITALISING

## **COASTING**

COASTING's transnational partnership will activate synergies and cooperation to share specific solutions for an integrated and responsible management of coastal areas, particularly invested by tourism criticalities. The project will capitalise on previous experiences related to sustainable development and landscape recovery so that a new shared methodology will enhance the governance tool with activities focused on tourism qualification and sustainability

---

INTEGRATED

## **INHERIT**

INHERIT aims to conserve and valorise natural heritage in the Interreg MED coastal and maritime tourist destinations. It will promote sustainable tourism, alleviating seasonality and tackling the surpassing of the hosting capacity, by designing and implementing a "bottom-up" protection approach relying on self-regulation and monitoring by local society and tourism stakeholders.

---

INTEGRATED

## **HERIT-DATA**

The project aims at reducing the impact of tourism-related human activities on cultural heritage, with a special focus on old towns & sites of particular cultural heritage or archaeological interest for visitors, including UNESCO World Heritage Sites, very present in the Interreg MED territories. HERIT-DATA plans to develop a sustainable and responsible tourism management towards cultural heritage by taking advantage of technology and innovation in management tools (Smart Cities), as well as other policy and social measures



**STRENGTHENING BIODIVERSITY  
AND ECOSYSTEMS**





# BIODIVERSITY PROTECTION

EU policies have reaffirmed the importance of protected areas for the conservation of biological diversity. In this context, the “Biodiversity Protection” thematic aims at strengthening the management and networking capacities of protected areas, to adapt and improve protection measures. The preservation of the biodiversity of protected natural coastal and maritime ecosystems is a key element of the future Mediterranean.

The projects found under this thematic are also working to reach a better integration of protected areas in regional development strategies (exchange of information, strategies, and regulations). They should aim at, for example, improving conservation status and water management, fighting against invasive species and monitoring fishing and tourism activities.

The Biodiversity Protection community is led by PANACeA project, whose main objective is the creation of synergies and new partnerships among Mediterranean stakeholders. PANACeA also seeks to boost networking and management efforts in Mediterranean Protected areas (MPAs) as a mechanism to enhance nature conservation and protection in the region.

This action will be truly formalised through the Mediterranean Biodiversity Protection Platform (BPP), which contains recommendations and data gathered by the whole community.

LOCATIONS	SUBTHEMES	KEY TARGET GROUPS
<ul style="list-style-type: none"><li>• Coastal Areas</li><li>• Islands</li></ul>	<ul style="list-style-type: none"><li>• Marine Litter</li><li>• Marine Protected Areas</li><li>• Natural Conservation</li><li>• Pollution Assessment</li><li>• Coastal/Dune Resilience</li></ul>	<ul style="list-style-type: none"><li>• Public Authorities</li><li>• Research Structures</li><li>• Protected area management bodies and fishermen</li><li>• NGO/Civil Society</li></ul>





## ACT4LITTER

The ACT4LITTER project identifies effective and feasible prevention measures to tackle marine litter in the Mediterranean Protected Areas (MPAs) through the development of an appropriate decision-making tool, able to assess the effectiveness of such measures. This tool will help MPA managers to manage their specific marine litter issue ACT4LITTERs team has identified a list of more than a 100 potential prevention measures to tackle marine litter and has developed a template for the feasibility assessment of these measures. Until now, the project has enrolled ten MPAs to develop specific action plans by testing its decision making tool.

TOTAL PROJECT BUDGET : € 538549,58  
ERDF PROJECT BUDGET : € 457 767,14

### PARTNERS

- LP : Catalan Waste Agency (ES)
- Network of Marine Protected Area Managers in the Mediterranean (FR)
- Sant'Anna School of Advanced Studies (IT)
- Mediterranean information Office for Environment, Culture and Sustainable Development (GR)



## AMAre

Many species and habitats in Marine Protected Areas (MPAs) are exposed to stressors. AMAre wants to improve the efficiency of MPAs by studying the distribution and effects of human pressures using shared and coordinated methodologies developed with local stakeholders. AMAre is building a common vision to be shared among the MPAs through:

- spatial Geoportal including environmental data, guidelines for early warning of regime shifts and guidelines for management plans.
- Guidelines for early warning of regime shifts;
- Guidelines for a standard management plan and for assessing alternative management options.

TOTAL PROJECT BUDGET : € 2 663 093,33  
ERDF PROJECT BUDGET : € 2 263 629,33

### PARTNERS

- LP : National Inter-University Consortium for Marine Sciences (IT)
- Euro-Mediterranean Centre on Climate (IT)
- National Research Council (IT)
- Blanes Centre for Advanced Studies (ES)
- French Research Institution for Exploitation of the Sea (FR)
- Management Consortium of Torre Guaceto (IT)
- Management Body of the National Marine Park of Alonissos Nothern Sporades (GR)
- Hellenic Centre for Marine Research (GR)
- University of Malta (MT)
- Regional Government of the Balearic Islands (ES)



## ConFish

Confish aims to create a network including local stakeholders, social scientists and fisheries scientists, to deliver a framework that will refine the efficiency of fisheries management. The project will work with cutting-edge genomics techniques and local stakeholder involvement through the whole framework creation to promote the capacity building and knowledge transfer between fishermen and scientists.

This bottom-up approach to fisheries management will enable the identification of fishery areas that are critical to preserve, both from a scientific and from a social perspective, extensively contributing to the sustainability of Mediterranean fisheries.

TOTAL PROJECT BUDGET : € 561 596,51  
ERDF PROJECT BUDGET : € 477 357,03

### PARTNERS

- LP : University of Zagreb (HR)
- Association for Nature, Environment and Sustainable Development Sunce (HR)
- Instituto Superior Técnico (PT)
- Italian National Institute for Environmental Protection and Research (IT)
- Institute of Marine Sciences (ES)



## EcoSUSTAIN

EcoSUSTAIN tries to maintain biodiversity and natural ecosystems in protected areas through improved management, innovative tools and water quality monitoring. So far, EcoSUSTAIN's team has developed a Status report of national parks and an Operations strategy and action plan which includes management, monitoring, information on how to train staff, test, monitor water quality, and which buoys to procure.

TOTAL PROJECT BUDGET : € 1 753 226,36  
 ERDF PROJECT BUDGET : € 1 262 821,65  
 IPA PROJECT BUDGET : € 227 420,90

### PARTNERS

- LP : University of Rijeka **(HR)**
- RGO Communications Ltd **(HR)**
- ALOT S.r.l. **(IT)**
- REGIONAL PARK OF MINCIO **(IT)**
- Development Agency of the Una – Sana Canton **(BA)**
- Democritus University of Thrace **(GR)**
- Global Nature Foundation **(ES)**
- Aratos Technologies S.A. **(GR)**
- Public Company Una National Park Ltd. Bihac **(BA)**
- Public Institution, National park Krka, **(HR)**



## FishMPABlue2

The project is testing a "Small Scale Fisheries governance toolkit" in 11 Marine Protected Areas (MPAs) and assessing its ecological effectiveness, benefits and the social acceptance of management measures. The "MPA Pilot Implementation Plans" involve capacity building for local fishermen, and governance measures. The benefits will be measured through an environmental and socio-economic monitoring campaign.

TOTAL PROJECT BUDGET : € 3 500 000,00  
 ERDF PROJECT BUDGET : € 2 975 000,00

### PARTNERS

- LP : Italian Federation of Parks and Nature Reserves **(IT)**
- Mediterranean Protected Areas Network **(FR)**
- National Inter-University Consortium for Marine Sciences **(IT)**
- WWF Adria **(HR)**
- University Nice Sophia Antipolis **(FR)**
- WWF Mediterranean **(IT)**
- International Union for Conservation of Nature **(ES)**
- Association of the actors from the Var for a small coast fishing and sustainable maritime activities **(FR)**



## MEDSEALITTER

The aim of MEDSEALITTER is to define and adopt the right measures to develop cost-effective protocols to monitor and manage the litter impact on the biodiversity of the Mediterranean Sea. This action involves Marine Protected Areas (MPAs), scientific organisations and environmental NGOs. So far, the project has defined the fundamental scientific elements on which the protocols will be developed in the next phase.

TOTAL PROJECT BUDGET : € 2 402 741,83  
 ERDF PROJECT BUDGET : € 2 042 330,55

### PARTNERS

- LP : Cinque Terre National Park and Marine Protected Area **(IT)**
- Legambiente Onlus **(IT)**
- Italian National Institute for Environmental Protection and Research **(IT)**
- University of Barcelona **(ES)**
- Mediterranean Association to Save the Sea Turtles **(GR)**
- University of Valencia **(ES)**
- Comune di Villasimius - Capo Carbonara Marine Protected Area **(IT)**
- Ecole Pratique des Hautes Etudes **(FR)**
- Hellenic Centre for Marine Research **(GR)**
- EcoOcean Institute **(FR)**



## MPA-ADAPT

The MPA-ADAPT's goal is to develop collaborative and site-specific adaptation plans for Mediterranean Marine Protected Areas (MPAs) to enhance their resilience to climate change impacts. At this stage, MPA-Adapt prepared materials and capacity building for MPA managers on standardised monitoring protocols, vulnerability assessments and adaptation action plans on climate change. Five MPAs displaying contrasted ecological and socio-economic settings are developing specific adaptation plans for climate change.

TOTAL PROJECT BUDGET : € 1 904 257,06  
ERDF PROJECT BUDGET : € 1 618 580,25

### PARTNERS

- LP : Institute of Marine Sciences (ES)
- Italian National Institute for Environmental Protection and Research (IT)
- International Union for Conservation of Nature (ES)
- Public Institution Brijuni National Park (HR)
- Marine Protected Pelagic Islands (IT)
- Consortium of Management of Portofino MPA (IT)
- Corsican Agency for Environment (FR)
- National Parc of Port-Cros (FR)



## POSBEMED

Posidonia oceanica is a Mediterranean endemic sea plant, which is vital to aquatic ecosystems and coastline protection. However, municipalities in tourist areas see it negatively.

POSBEMED aims to define a transnational joint management strategy for Posidonia beach/dunes systems. It also aims to offer common sustainable tools for local administrators and Protected Areas managers and develop a strategic model of integrated governance, which will link local blue growth to the conservation of this natural asset.

TOTAL PROJECT BUDGET : € 596 750,76  
ERDF PROJECT BUDGET : € 507 238,15

### PARTNERS

- LP : Entente Interdépartementale de Démoustication Méditerranée (FR)
- International Union for Conservation of Nature (ES)
- Foundation, International Marine Centre (IT)
- ECO-logica srl (IT)
- Hellenic Centre for Marine Research (GR)



## WETNET

By defining common priorities for the conservation of Interreg MED wetlands, WETNET is building a common territorial strategy for their integrated management. Building on previous EU experiences (River Contracts), WETNET seeks to test and transfer 'Wetlands Contracts', acting through broad participatory processes where private and public entities are committed to mainstreaming wetlands preservation into their ordinary activities, limiting conflicts between preservation issues and economic activities.

TOTAL PROJECT BUDGET : € 2 252 046,00  
ERDF PROJECT BUDGET : € 1 914 239,10

### PARTNERS

- LP : Veneto Region (IT)
- Province of Vercelli (IT)
- Research Centre of the Slovenian Academy of Sciences and Arts (SI)
- Andalusian Federation of Towns and Provinces (ES)
- Spanish Ornithological Society (ES)
- Italian Center for River Restoration (IT)
- Government of Aragon (ES)
- Development and Innovation Network (PT)
- Gozo Development Agency (MT)
- Tour du Valat Foundation (FR)

## STARTING IN 2018

### CAPITALISING

#### **PHAROS4MPAs**

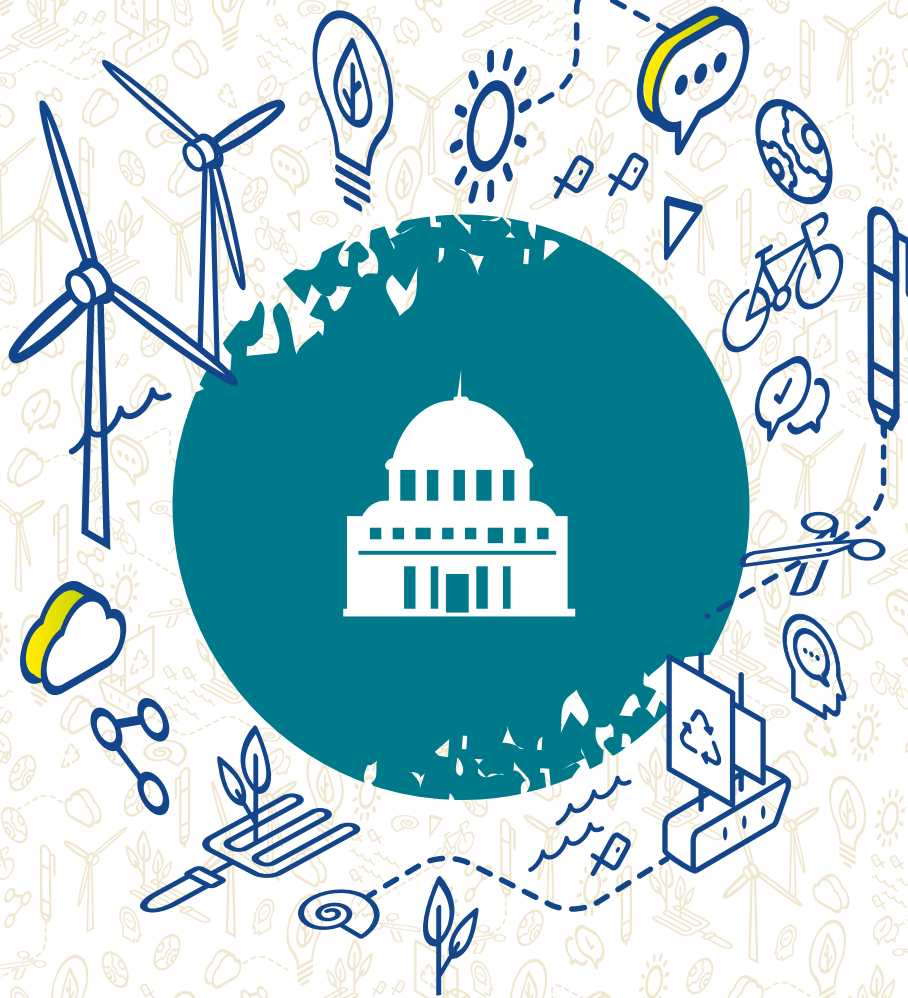
PHAROS4MPAs will deliver an integrated framework for recommendations on the necessary practical collaboration between Mediterranean MPAs and the maritime sectors adapted to, and designed for the project's targets. The expected change originating from the project is an enhanced management effectiveness and networking for Mediterranean MPAs, which will ultimately contribute to the conservation of marine biodiversity and natural ecosystems.

---

### INTEGRATED

#### **PlasticBusterMPAs**

The overall objective of the PlasticBusters MPAs project is to contribute to maintaining biodiversity and preserving natural ecosystems in pelagic and coastal MPAs, by defining and implementing a harmonised approach against marine litter. The project entails actions addressing the whole management cycle of marine litter, from monitoring and assessment to prevention and mitigation, as well as actions to strengthen networking between and among pelagic and coastal MPAs.



**ENHANCING MEDITERRANEAN  
GOVERNANCE**



# GOVERNANCE

During the 2014-2020 programming period, the Interreg MED Programme has invested in the innovative Axis 4, tackling the need to reinforce governance efforts in the Mediterranean Region. The Programme participating States acknowledged the need to improve the coordination of policies and actions to ensure a more informed use of public funds and seize additional opportunities for development and growth.

This approach is reflected in the PANORAMED project, a platform for multilevel intergovernmental dialogue among national, regional, European and international actors.

## PANORAMED: SUPPORT GOVERNANCE PROCESSES IN THE MEDITERRANEAN

The Axis 4 PANORAMED platform is an innovative intergovernmental project that joins 19 ministerial and regional authorities of the European States of the Mediterranean shores and of the three IPA Programme States, namely Albania, Bosnia and Herzegovina and Montenegro.

The main goal of this initiative is to contribute to the definition of shared policies and actions to respond to challenges and sustainable growth opportunities of the Mediterranean Region.

Under the coordination of the Lead Partner, the Spanish Ministry of Finance and Public Administration, the partner authorities will discuss themes of high relevance for the region, such as coastal and maritime tourism or maritime surveillance, in order to identify top down strategic projects and contribute to shared policies and frameworks.

Approved in June 2017, with a nine million euros budget and running until spring 2022, the project ensures a medium/long term perspective and has the potential to give a positive contribution to new EU strategies in the Mediterranean beyond the time length of the Interreg MED Programme.

### PANORAMED MAIN EXPECTED RESULTS

- Application of evidence based approach: benchmarking analysis on gaps and growth opportunities, based on projects deliverables and results
- Support to policy making processes at Mediterranean scale and post-2020 debate
- Transnational thematic working groups of national and regional experts
- Terms of reference for strategic projects
- Development of stable synergies with key actors of the Mediterranean, who are associated to PANORAMED initiative
- Transnational high-level events



**PARTNERS**

- SPAIN** (Ministry of Finance and Public Administration- General Directorate for European Funds) LEAD PARTNER
- ALBANIA** (Ministry of European Integration)
- BOSNIA AND HERZEGOVINA** (Directorate for European Integration of Council of Ministers of Bosnia and Herzegovina)
- CROATIA** (Ministry of Regional Development and EU Funds)
- CYPRUS** (Directorate general for European Programmes, coordination and development)
- FRANCE** (Commissariat General for Equality of Territories and General Secretariat for the Sea. Region Provence-Alpes-Côte d’Azur)
- GREECE** (Ministry of Economy, Development and Tourism - General Secretariat for Public Investments & NSRF; Region of Crete)
- ITALY** (National Agency for the territorial cohesion, Region Emilia Romagna, Region Marche, Region Molise and Region Tuscany)
- MALTA** (Ministry for European Affairs and the Implementation of the Electoral Manifesto)
- MONTENEGRO** (Ministry of foreign affairs and European integration - General directorate for coordination of EU assistance Programmes)
- PORTUGAL** (Ministry of Planning and Infrastructures - Agency for Development and Cohesion)
- SLOVENIA** (Government Office for development and EU Cohesion Policy)

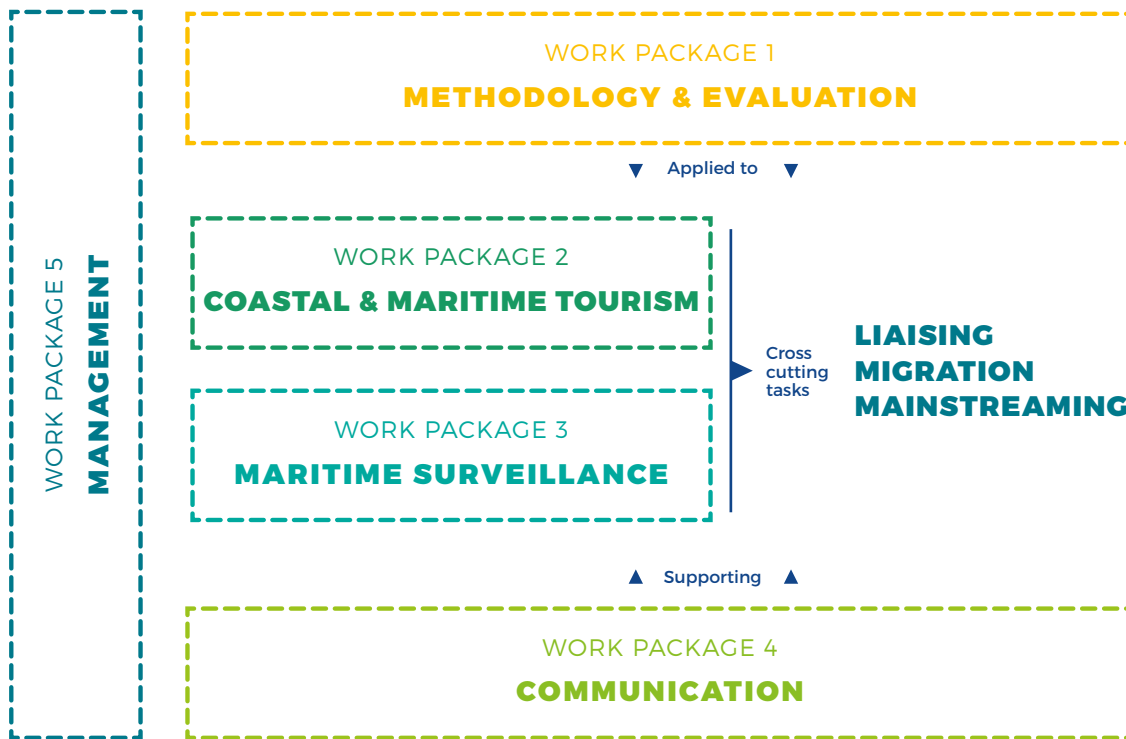
**ASSOCIATED PARTNERS**

The associated partners are key drivers of the Axis 4 PANORAMED project in terms of exploring and acting on complementarities and synergies as well as defining possible alignments of initiatives and, potentially, of funds.

- EU - DG REGIO, DG MARE, DG NEAR**
- UNION FOR THE MEDITERRANEAN**
- UNEP MAP**
- CENTER FOR THE INTEGRATION OF THE MEDITERRANEAN**
- INTERREG ADRION & INTERREG BALKAN MED**
- ENI CBC MED**
- INTERACT**
- INTERREG EUROPE**
- ESPON**
- EUSAIR**
- BLUEMED Initiative**
- CPMR** (Conference of Peripheral Maritime Regions – Intermediterranean Commission)



The overall architecture of the Axis 4 PANORAMED project is summarized in the following scheme :









[www.interreg-med.eu](http://www.interreg-med.eu)

Programme co-financed by the European Regional Development Fund