

Margherita Norbiato WORKING GROUP 4

*BRINGING BUGS BACK TO LIFE: action for threatened invertebrates
LIFE Platform meeting on invertebrates*

*18th- 19th September 2018, STEP Scotland Business Enterprise, Stirling,
Scotland*



LIFE EREMITA

Coordinated actions to preserve residual
and isolated populations of forest and
freshwater insects in Emilia-Romagna
LIFE14 NAT/IT/000209 EREMITA

ADMINISTRATIVE INFORMATION

Starting date: 01/01/2016 Expected end date: 31/12/2020 (5 years)

Coordinating beneficiary: Emilia-Romagna Region  **Regione Emilia-Romagna**

Associated Beneficiaries :

2 National Parks

4 Authorities for the management of Parks and Biodiversity

Budget: 2.126.987 EUR

EU financial contribution: 59.66%



PROJECT AREA

More than 70 Natura 2000 sites involved in the project!

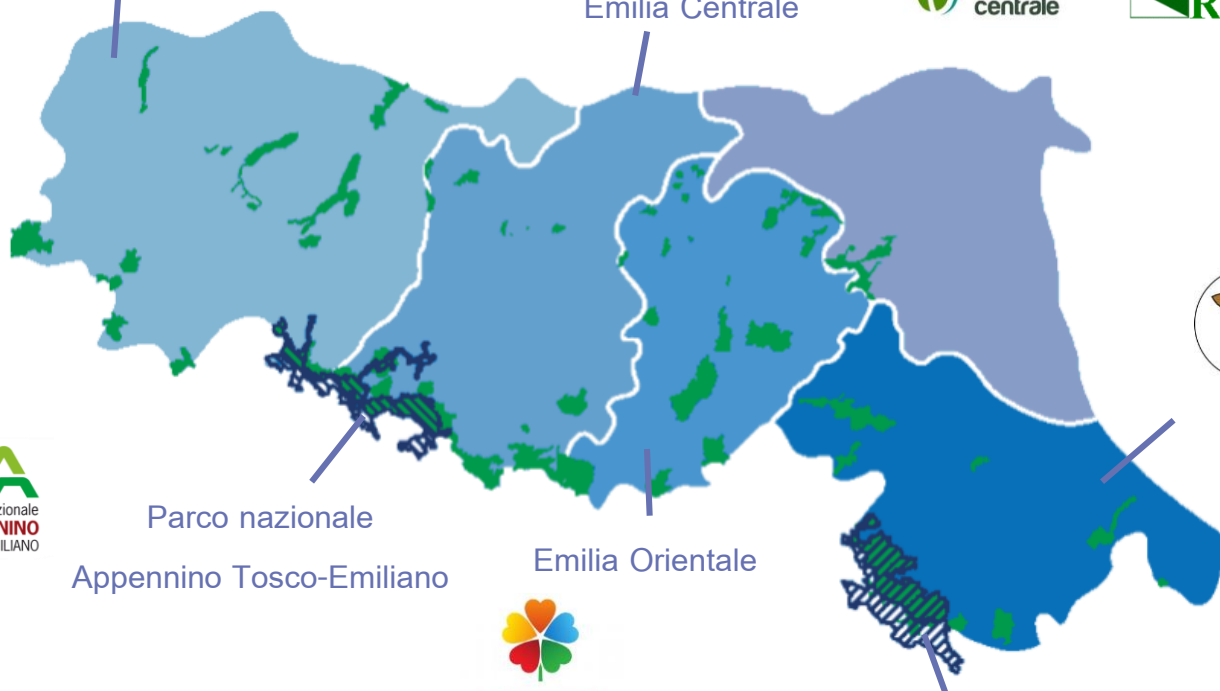


Emilia Occidentale



Emilia Centrale

Regione Emilia-Romagna



Parco nazionale
Appennino Tosco-Emiliano



I PARCHI NEL CUORE
Area di Gestione per i Parchi e la Biodiversità Emilia Orientale

Emilia Orientale

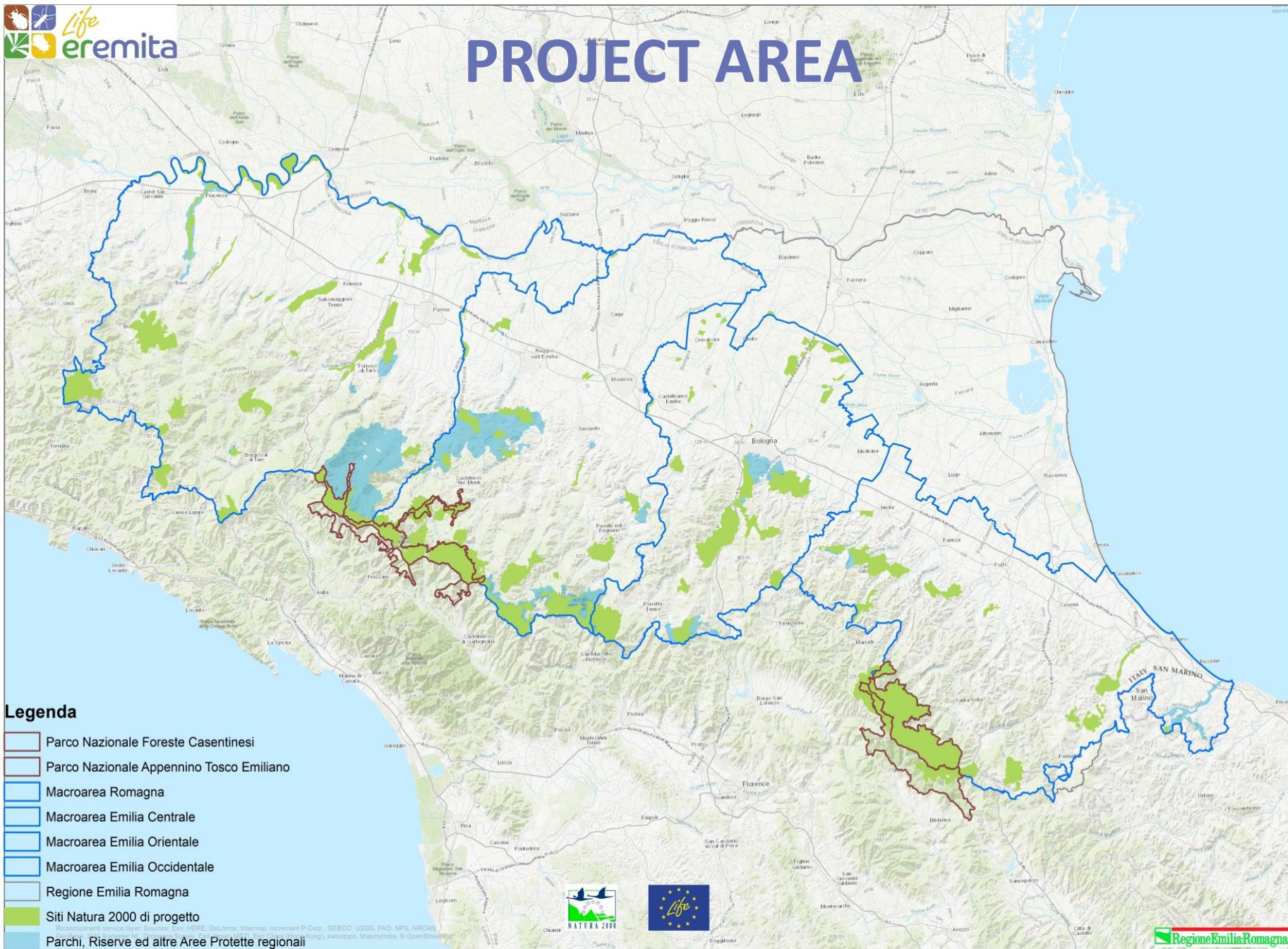


Romagna



Parco nazionale Foreste Casentinesi
Monte Falterona e Campigna

PROJECT AREA



Legenda

- Parco Nazionale Foreste Casentinesi
- Parco Nazionale Appennino Tosco Emiliano
- Macroarea Romagna
- Macroarea Emilia Centrale
- Macroarea Emilia Orientale
- Macroarea Emilia Occidentale
- Regione Emilia Romagna
- Siti Natura 2000 di progetto
- Parchi, Riserve ed altre Aree Protette regionali



PROJECT OBJECTIVES



The aim of the project is to improve the conservation status of the remaining populations of 4 species of insects in the Emilia–Romagna Region :

2 saproxylic, priority species:



* *Osmoderma eremita*



* *Rosalia alpina*

2 aquatic species, non priority:



Graphoderus bilineatus



*Coenagrion mercuriale
castellanii*

WHY TARGETING INSECTS

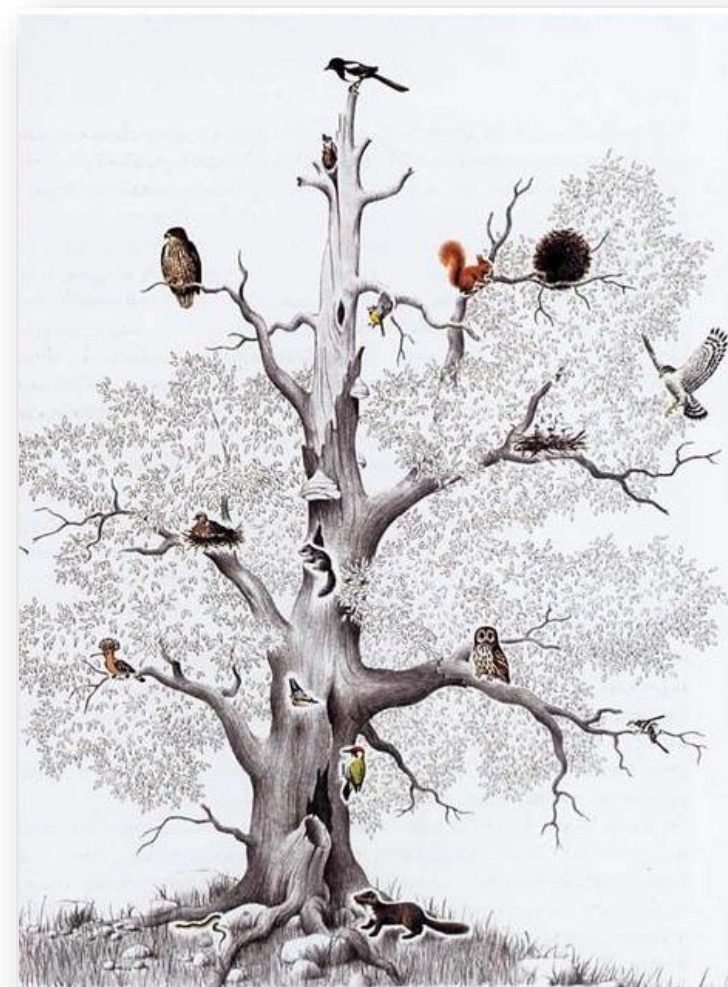


- Flag species
- Vital population are related to suitable habitat, that are woods with a good proportion of decaying matter.
- Wetlands and small ponds and creek with good quality of water.



THREATS

1. reduction or alteration of the target species habitats (old trees, inland water)
2. extreme isolation of the remaining populations of the four insects
3. local extinction of the remaining populations



SPECIFIC OBJECTIVES OF THE ACTIONS

Increase the availability of habitats for the remaining populations, with the ex-novo creation of adequate habitats, and the improvement of their connectivity.

Ex-situ reproduction and repopulation of the 4 species, with the aim to increase existing population and populate new habitats

Increase the knowledge of presence/absence, distribution and abundance of the remaining populations of the target species in the project area

SPECIFIC OBJECTIVES OF THE ACTIONS

Elaborate a management plan and specific measures for conservation

Encourage appropriate and compatible behaviour with the needs of protection by stakeholder

Spread and develop solutions for the active involvement of farmers, operators and users of forest areas within the RN2000 sites and of stakeholders in general

MONITORING - ACTIONS

- ACTION A.2 - Ex ante Monitoring
- ACTION A.3 - Individuation / inventory habitat trees
- ACTION A.4 – Individuation of adequate lakes, ponds, Streams for *Graphoderus bilineatus* e *Coenagrion mercuriale castellanii*



Saproxylic species

* *Osmoderma eremita*

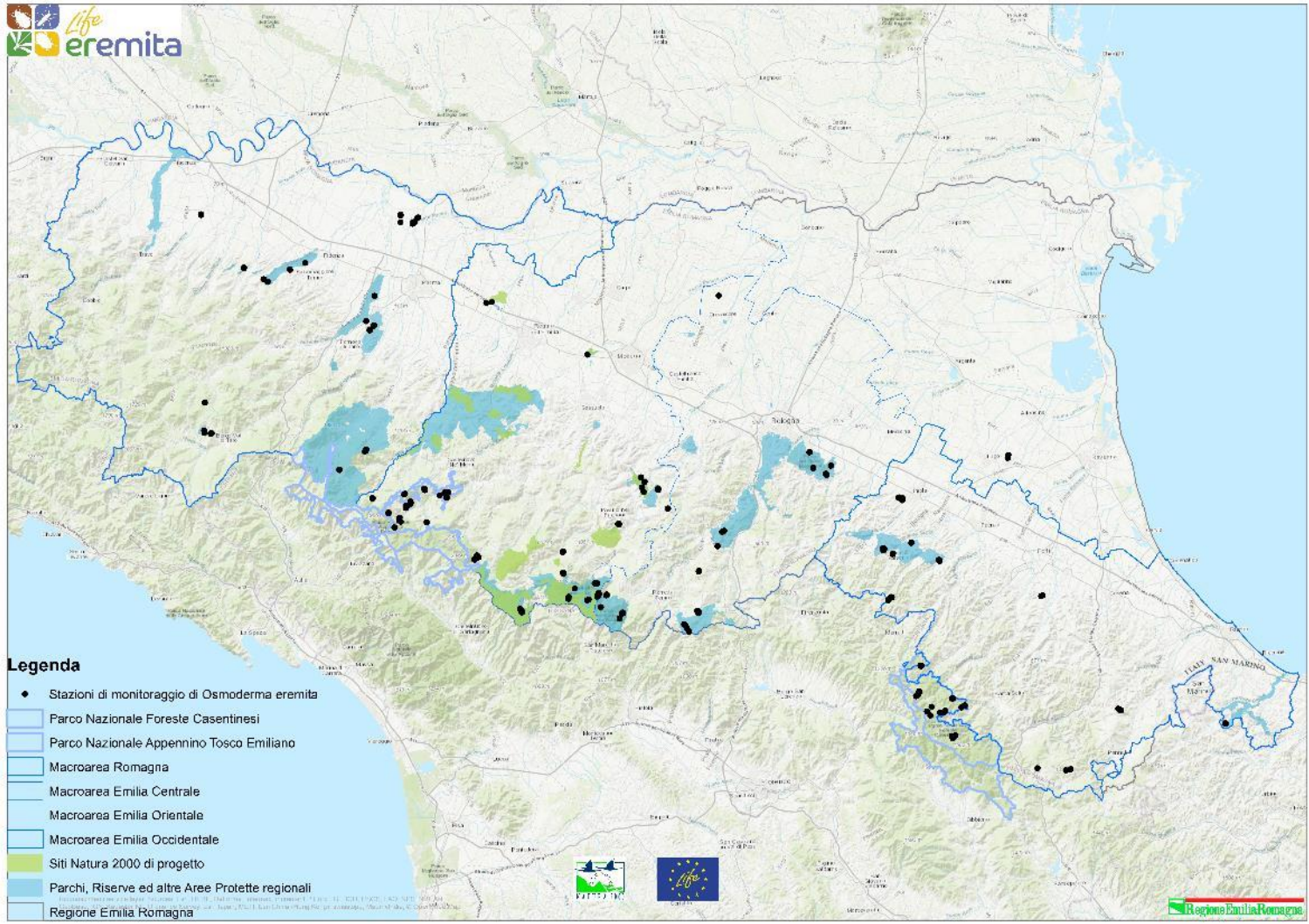


* *Rosalia alpina*



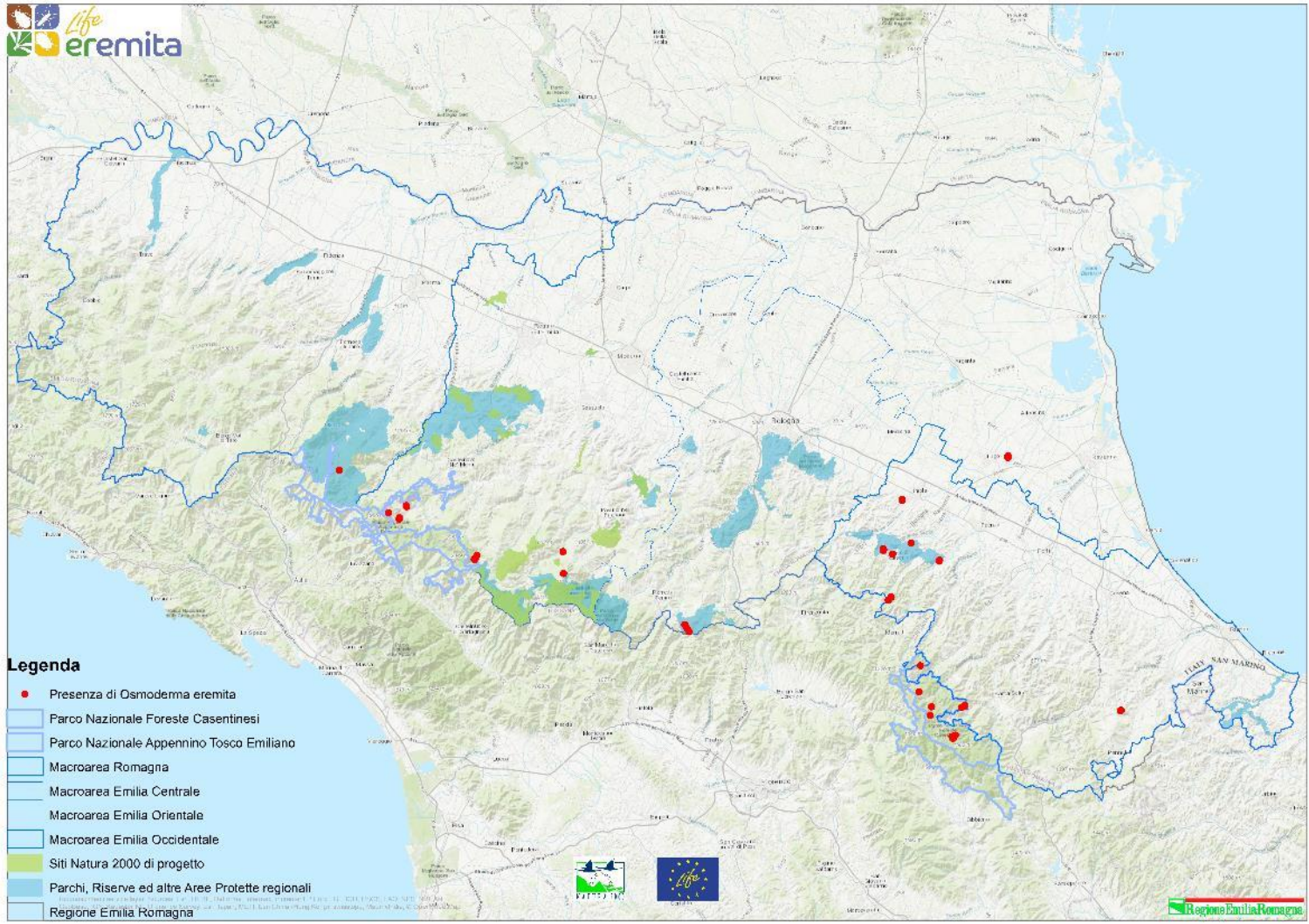
Results

Osmoderma eremita - monitoring station



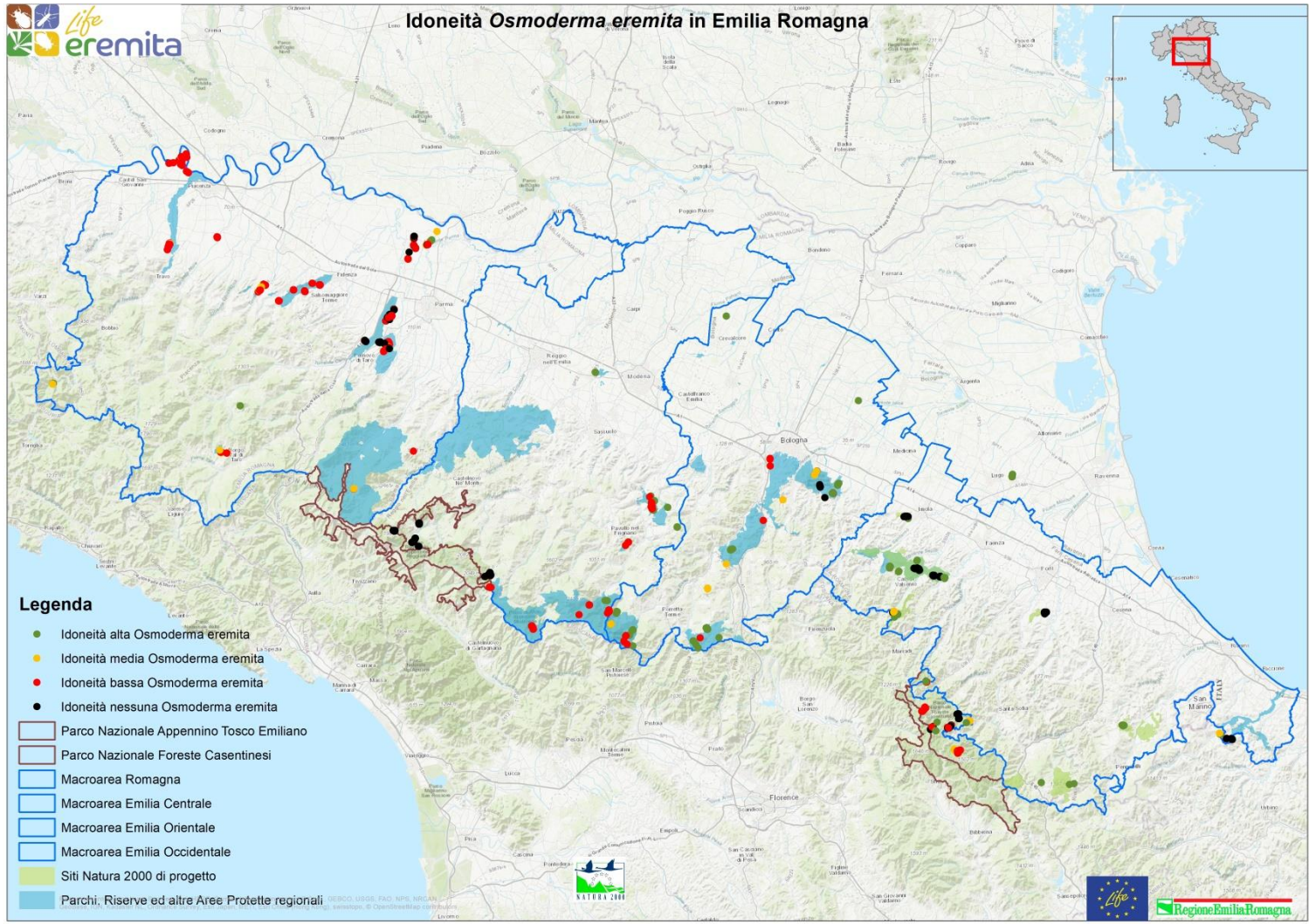
Results

Osmoderma eremita – verified presence



Results

Osmoderma eremita – Individuation / inventory habitat trees



Results

Rosalia alpina - monitoring station



Results

Rosalia alpina – Individuation / inventory habitat trees





ACTIONS FOR THE VOLUNTEERS

IMPLEMENTATION OF THE ACTION A,5 FOR TRAINING OF VOLUNTEERS AND COLLABORATORS

The volunteers can, **with the staff project**, help to support:

- Study and monitoring activities
- Operative interventions of active conservation
- Captive breeding activities
- Dissemination and sensibilization activities (EREMITA tour Action E7)

BREEDING EXPECTED

- 3 ex situ for *Osmoderma* e *Graphoderus*: PNFC (Santa Sofia - FC), MAR (Russi - RA) and PNATE (Ligonchio - RE)
- in situ of *Osmoderma* with installation of wood boxes
- Moving expected for *Coenagrion*
- Insert in nature of *Osmoderma* e *Graphoderus* from breedings



PRELIMINARY RESULTS



Beneficiary	Osmoderma (HABITAT TREES)	Rosalia (HABITAT TREES)	Graphoderus (WETLANDS)	Coenagrion (SMALL BASIN)
PNFC	44	88	4	1
MAR	78	16	8	7
MEOR	204	13	52	40
MEC	40	133	18	3
PNATE	46	79	11	0
MEOC	484	0	0	3
FOUND	896	329	93	54
EXPECTED	Min. 800	Min. 800/900	5/8	5/10

Thank you for the attention!
Hvala za pozornost!

E-mail lifereemita@regione.emilia-romagna.it
website <http://ambiente.regione.emilia-romagna.it/life-eremita>
 <https://www.facebook.com/lifereemita/>

Graziano Caramori, Cristina Barbieri